

# ***Comparative Information on New South Wales Local Government Councils 1994/95***

*Published July 1996 ISSN 1320-6788*

## ***NSW Department of Local Government***

### ***Access to Services***

The Department of Local Government is located at  
Civic Tower Building  
Levels 9 - 11  
66 - 72 Rickard Rd  
Bankstown NSW 2200

### ***Postal Address***

Locked Bag 1500  
Bankstown NSW 2200

***Telephone*** (02) 9793 0793  
***Facsimile*** (02) 9793 0799  
***Tty*** (02) 9707 2508  
***email*** [dlg@dlg.nsw.gov.au](mailto:dlg@dlg.nsw.gov.au)

### ***Office Hours***

Monday to Friday 8.30am to 5.00pm (Special arrangements may be made if these hours are unsuitable). All offices are wheelchair accessible.

### ***Alternative Media Publications***

Special arrangements can be made for our publications to be provided in large print or in an alternative media format. If you require this service please contact the publications section on (02) 9793 0711.

**All due care has been taken in preparing and checking this information document. The Department of Local Government emphasises that the document is the Department's view only and should not be relied upon in any relevant legal proceedings. A council or other parties should be guided by their own legal advice.**

# *Foreword*

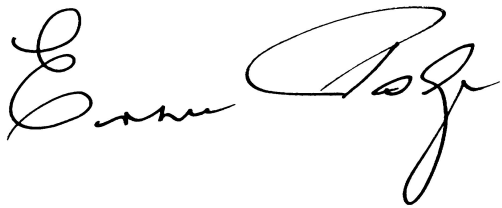
The Government is committed to the implementation of best practice in local government so the community receives the most efficient and effective delivery of services.

This publication uses twenty five key performance indicators to monitor the performance of all councils in this state across their broad spectrum of activities. For the first time the median and mean processing times of building and development applications are included.

Key performance information enables the community, and each council, to compare trends relative to other councils. It is assisting in the benchmarking of performance and the development of industry best practice models.

Members of the community who require further information should approach their own council for more details or explanation. Councils are also encouraged to evaluate the information for comparative purposes. It should be stressed that the figures provide indicators only and conclusions should not be drawn without qualitative assessments being made.

I would like to express my appreciation to all councils for their time and efforts in providing the information.

A handwritten signature in black ink, appearing to read 'Ernie Page', written in a cursive style.

***ERNIE PAGE***  
***Minister for Local Government***



# Contents

Introduction .....	5
Data Collection .....	5
1994/95 Publication .....	6
Interpretation .....	7
Key Performance Indicators - Objectives and Formulae .....	8-14
Australian Classification of Local Governments .....	15
<b>KEY PERFORMANCE INFORMATION</b>	
Financial & Corporate .....	17-30
Library Services .....	31-44
Domestic Waste Management & Recycling Services .....	31-44
Road Services .....	45-58
Sewerage Services .....	45-58
Water Supply Services .....	45-58
Planning & Regulatory Services .....	59-74
Environmental Management & Health Services .....	75-87
Recreation & Leisure Services .....	75-87
Community Services .....	75-87



# *Introduction*

This is the second comparative performance publication under the new accrual accounting standard, AAS 27 Financial Reporting by Local Governments, which has applied to the financial reports prepared by councils throughout Australia on or after 1 July 1993.

Twenty five key performance indicators have been selected to monitor the 1994/95 performance of councils. The first publication under the new accounting regime covered the 1993 calendar year. Data has not been collected for the transition reporting period from January to June 1994.

The Australian Classification of Local Governments has been used for this publication. Universal use of the national classification system which was introduced in September 1994 offers opportunities for cross-analysis as well as providing a greater understanding of local government in Australia.

Subsequent publications will contain performance data for each financial year. They will enable each council to compare trends in their key performance indicators and review performance relative to other councils.

## *Data Collection*

A trial was conducted with four councils (Muswellbrook Shire, Newcastle City, Tweed Shire and Warringah) to test the proposed data collection procedures for this publication. The involvement of these councils was appreciated and their feedback resulted in a refinement of the methodology.

Data for the key performance indicators was collected by a survey of councils.

Returns were required to be electronically mailed to the Department. Forty five per cent of councils returned the data by the due date. This delayed the publication.

To assist Councils with the accuracy of the data they supplied the Department conducted extensive testing for validity and reasonableness. Councils were consulted widely concerning these tests.

# 1994/95 Publication

## *(a) Key Performance Indicators*

The key performance indicators are set out under 10 activities:

- \* Financial & Corporate
- \* Library Services
- \* Domestic Waste Management & Recycling Services
- \* Road Services
- \* Sewerage Services
- \* Water Supply Services
- \* Planning & Regulatory Services
- \* Environmental Management & Health Services
- \* Recreation & Leisure Services
- \* Community Services

Objectives and formulae for the key performance indicators are set out on pages 8-14.

## *(b) Planning and Regulatory Services*

In the 1993 publication three key performance indicators: *Planning and Regulatory Costs per Capita*; *Building and Development Applications Received and Determined Per Staff Member*; and *Legal Costs as a % of Total Costs*, were used.

To provide more meaningful data four key performance indicators: *Planning and Regulatory Costs per Capita*; *Mean Turnaround Time for Building and Development Applications*; *Median Turnaround Time for Building and Development Applications*; and *Legal Costs as a % of Total Costs* are shown in this publication. The number of Building and Development Applications determined is also identified.

## *(c) Category Groupings*

The councils are listed in categories according to the Australian Classification of Local Governments which commenced in September 1994. The Steering Committee which developed the system comprised representatives from the Commonwealth, State and Local Governments. This broad representation ensures the system has extensive applicability and wide support.

The classification system uses population, population density, population growth and location to identify twenty two categories of local government. Details of the categories are set out on page 15.

*(d) Category Averages*

These are calculated by using the data supplied by each Council and are not merely averages of each Council's category results. For example, the averages for the Average Rate per Residential Assessment were obtained by adding the residential rates' revenues of each council in a category and dividing the results by the total number of rateable residential properties in that category.

The category averages for the median times for building and development applications are those points where one half of the population is above the median and the other half is below it.

*(e) General*

The total permanent populations within council boundaries were based on the latest estimated residential populations (June 1994) as advised by the Australian Bureau of Statistics.

Where data was not available to a Council the code N/A has been used.

## *Interpretation*

When comparing one council with another or assessing one council's performance it is important to be aware that these key performance indicators do not on their own give the full picture of council performance. Although they show the differences between councils across a selection of specific activities they do not explain why these differences have arisen.

The indicators are designed to help both the community and councils judge whether the latter are performing well or not and whether they are improving their performance or not. This should trigger further investigation of the causes of differences or changes in performance.

In assessing performance, allowance must be made for differences in local circumstances which can influence how a council provides its services. Some of the circumstances that influence council services are: population density, daily or seasonal changes in population, age of the population and geographical differences. Internal factors include: council objectives and policies, levels of service and range of functions undertaken.

# Key Performance Indicators

## SECTION 1 Financial and Corporate

### 1.1 Average Rate per Residential Assessment

**Objective** To highlight the level of Councils' residential rates (excluding water and sewerage rates).

**Formula** 
$$\frac{\text{Total Residential Rates Revenue}}{\text{Number of Rateable Residential Properties}}$$

### 1.2 Sources of Total Revenue

**Objective** To assess the degree of dependence on alternative sources of revenue - both operating and capital.

**Formula** 
$$\frac{X}{\text{Total Revenue}}$$
 (where X = Rates Revenue, User Charges, Interest, Grants, Contributions and Donations and Other Revenue.)

### 1.3 Average Interest Rate Paid

**Objective** To assess the relative cost of Council's loan borrowings.

**Formula** 
$$\frac{\text{Total Interest Expense on Loans}}{(\text{Opening Principal Outstanding} + \text{Closing Principal Outstanding})/2}$$

### 1.4 Current Ratio

**Objective** To monitor whether a Council has sufficient liquidity to meet its short term obligations and avoid a cash shortfall after allowing for funds earmarked for specific purposes.

**Formula** 
$$\frac{\text{Current Assets Less Current External Restrictions Not Included in Current Liabilities}}{\text{Current Liabilities}}$$

**1.5 Debt Service Ratio**

**Objective** To measure the extent of the impact of debt service on the operating revenue of Council.

**Formula** 
$$\frac{\text{Net Debt Service Cost (Principal and Interest)}}{\text{Operating Revenue}}$$

**1.6 Staff per 1,000 Capita**

**Objective** To highlight the ratio of staff to population numbers.

**Formula** 
$$\frac{\text{Average Full Time Equivalent Staff x 1000 (excluding trading undertakings)}}{\text{Total Permanent Population within Council Boundaries}}$$

*Note: The average full time equivalent staff is based on the total number of full or part-time staff on Council's payroll on the last pay day of June 1995.*

**SECTION 2 Library Services****2.1 Expenditure per Capita**

**Objective** Measures the gross expenditure for library services on a per capita basis.

**Formula** 
$$\frac{\text{Total Gross Expenditure}}{\text{Total Permanent Population within Council Boundaries}}$$

**2.2 Issues per Capita**

**Objective** Measures unit issues on a per capita basis.

**Formula** 
$$\frac{\text{Number of Issues Recorded}}{\text{Total Permanent Population within Council Boundaries}}$$

## **SECTION 3    *Domestic Waste Management & Recycling Services***

### **3.1            *Average Charge for Domestic Waste Management Services***

**Objective**        To highlight the relative level of Council's DWMS charge for comparative purposes.

**Formula**            
$$\frac{\text{Total Domestic Waste Management Charges}}{\text{Number of Residential Properties receiving Service}}$$

### **3.2            *Collection Costs Per Service for Domestic Waste Management***

**Objective**        To assess the efficiency of domestic waste collection (including recyclables).

**Formula**            
$$\frac{\text{Total Waste Collection Costs excluding Tipping costs (Domestic)}}{\text{Number of Services (Domestic Pick-ups per Week)}}$$

### **3.3            *KCA Recyclables - Kilograms per Capita per Annum***

**Objective**        Measures the effectiveness of Council's recycling service.

**Formula**            
$$\frac{\text{Total Kilograms of Recyclables Collected}}{\text{Total Permanent Population within Council boundaries}}$$

### **3.4            *KCA Domestic Waste - Kilograms per Capita per Annum***

**Objective**        Measures the effectiveness of Council's efforts in domestic waste minimisation.

**Formula**            
$$\frac{\text{Total Kilograms of Domestic Waste Collected}}{\text{Total Permanent Population within Council boundaries}}$$

## **SECTION 4    *Road Services***

### **4.1 (i)        *Road Maintenance Costs per Laned Kilometre of Urban Sealed Roads***

**Objective**        To demonstrate the costs of maintaining urban sealed roads.

**Formula**            
$$\frac{\text{Total Road Maintenance Costs for Urban Sealed Roads}}{\text{Total Laned Kms of Urban Sealed Roads}}$$

**4.1 (ii) Road Maintenance Costs per Laned Kilometre of Rural Sealed Roads**

**Objective** To demonstrate the costs of maintaining rural sealed roads.

**Formula** 
$$\frac{\text{Total Road Maintenance Costs for Rural Sealed Roads}}{\text{Total Laned Kms of Rural Sealed Roads}}$$

**4.2 Road Maintenance Costs per Laned Kilometre of Unsealed Roads**

**Objective** To demonstrate the costs of maintaining unsealed roads.

**Formula** 
$$\frac{\text{Total Road Maintenance Costs (Unsealed Roads)}}{\text{Total Laned Kms of Unsealed Roads}}$$

## **SECTION 5 Sewerage Services**

**5.1 Average Account (\$/Connection)**

**Objective** To highlight the relative level of Council sewerage accounts for comparative purposes.

**Formula** 
$$\frac{\text{Revenue from Sewerage Rates and Charges}}{\text{Total No. of Premises Connected to Sewerage}}$$

**5.2 Operating Costs (\$/Connection)**

**Objective** To assess the costs of providing services.

**Formula** 
$$\frac{\text{Management Expenses + Working \& Maintenance Expenses (ex depreciation)}}{\text{Total No. of Premises Connected to Sewerage}}$$

## **SECTION 6    *Water Supply Services***

### **6.1            *Average Account (\$/Connection)***

**Objective**        To highlight the level of Council water accounts for comparative purposes.

**Formula**            
$$\frac{\text{Revenue from Water Rates + Excess Water Sales \& Water Charges}}{\text{Total No. of Premises Connected to Water}}$$

### **6.2            *Operating Costs (\$/Connection)***

**Objective**        To assess the cost of providing services.

**Formula**            
$$\frac{\text{Management Expenses + Working \& Maintenance Expenses (ex depreciation)}}{\text{Total No. of Premises Connected to Water}}$$

## **SECTION 7    *Planning & Regulatory Services***

### **7.1            *Planning and Regulatory Costs per Capita***

**Objective**        To measure the cost of town planning and building control per head of population.

**Formula**            
$$\frac{\text{Total Planning \& Regulatory Costs}}{\text{Total Permanent Population within Council Boundaries}}$$

### **7.2 (i)        *Mean Turnaround Time in Calendar Days for Development Applications***

**Objective**        To measure the speed with which development applications are determined.

**Formula**            
$$\frac{\text{Total Calendar Days Taken to Determine Development Applications}}{\text{Number of Development Applications Determined}}$$

*Note: When joint applications submitted they are treated as a separate BA and DA.*

**7.2 (ii) Mean Turnaround Time in Calendar Days for Building Applications**

**Objective** To measure the speed with which building applications are determined.

**Formula** 
$$\frac{\text{Total Calendar Days Taken to Determine Building Applications}}{\text{Number of Building Applications Determined}}$$

*Note: When joint applications submitted they are treated as a separate BA and DA.*

**7.3 (i) Median Time in Calendar Days for Development Applications**

**Objective** To measure the speed with which development applications are determined.

**Formula** The median time is that point where one half of the population is above the median and the other half is below it. The process is to rank from lowest to highest the number of days taken to determine each application and select the middle one.

**7.3(ii) Median Time in Calendar Days for Building Applications**

**Objective** To measure the speed with which building applications are determined.

**Formula** The median time is that point where one half of the population is above the median and the other half is below it. The process is to rank from lowest to highest the number of days taken to determine each application and select the middle one.

**7.4 Legal Costs as a % of Total Planning and Regulatory Costs**

**Objective** To highlight the level of disputation in the Planning & Regulatory Process.

**Formula** 
$$\frac{\text{Legal Costs (related to P \& R only)}}{\text{Total Planning \& Regulatory Costs}}$$

## **SECTION 8    *Environmental Management & Health Services***

### **8.1        *Environmental Management and Health Costs per Capita***

**Objective**        To measure the cost of EM&H services per head of population.

**Formula**         
$$\frac{\text{Total Environmental Management \& Health Expenses}}{\text{Total Permanent Population within Council Boundaries}}$$

## **SECTION 9    *Recreation & Leisure Services***

### **9.1        *Net Recreation & Leisure Costs per Capita***

**Objective**        To measure the net cost of recreation and leisure services per head of population.

**Formula**         
$$\frac{\text{Net Recreation \& Leisure Costs}}{\text{Total Permanent Population within Council Boundaries}}$$

## **SECTION 10   *Community Services***

### **10.1       *Community Services Costs per Capita***

**Objective**        To measure the cost of community services per head of population.

**Formula**         
$$\frac{\text{Total Community Service Costs}}{\text{Total Permanent Population within Council Boundaries}}$$

# Australian Classification of Local Governments

Category	Step 1	Step 2	Step 3	Alpha						
1	<b>URBAN (U)</b> Pop. > 20000 <b>or</b> Pop. density >30 persons per sq km. <b>or</b> >= 90% of LGA population is urban	<b>Capital City (CC)</b>	Not Applicable	UCC						
2		<b>Metropolitan Developed (D)</b> Part of an Urban centre > 1 000 000 and Pop. Density > 600 / sq km	Small (S)	up to 30 000	UDS					
3			Medium (M)	30 001-70 000	UDM					
4			Large (L)	70 001-120 000	UDL					
5			Very large (V)	>120 000	UDV					
6	<b>REGIONAL (R)</b> An LGA with population <20 000 and population density < 30 persons per sq km and <90% of LGA population is urban	<b>Regional Town/City (R)</b>	Small	up to 30 000	URS					
7		<b>Significant Growth (SG)</b> Average annual population growth > 3%, population > 5000 and not remote	Medium	30 001-70 000	URM					
8			Large	70 001-120 000	URL					
9			Very large	>120 000	URV					
10			<b>Fringe (F)</b> A developing LGA on the margin of a developed or regional urban centre	Small	up to 30 000	UFS				
11	Medium	30 001-70 000		UFM						
12	Large	70 001-120 000		UFL						
13	<b>AGRICULTURAL (A)</b>		Very large	>120 000	UFV					
14			<b>RURAL (R)</b> An LGA with population <20 000 and population density < 30 persons per sq km and <90% of LGA population is urban	<b>Significant Growth (SG)</b> Average annual population growth > 3%, population > 5000 and not remote	Not Applicable	RSG				
15							<b>Agricultural (A)</b>	Small	up to 2000	RAS
16								Medium	2001-5000	RAM
17	Large	5001-10 000						RAL		
18	<b>REMOTE (T)</b> Situated in a remote locality		Very large	10 001-20 000	RAV					
19			<b>Remote (T)</b> Situated in a remote locality		Extra small	up to 400	RTX			
20					Small	401-1000	RTS			
21					Medium	1001-3000	RTM			
22	Large	3001-20 000			RTL					

Note: For 'Rural Agricultural Very Large' (RAV), 'Rural Remote Large' (RTL) and 'Rural Significant Growth' (RSG), 20 000 is the upper limit because beyond this number all local governments are deemed 'Urban'.



# FINANCIAL AND CORPORATE

COUNCIL	AVERAGE				SOURCES OF TOTAL REVENUE							AVERAGE	CURRENT	DEBT	STAFF PER	
	RATE PER RESIDENTIAL ASSESSMENT	%	%	%	%	%	%	%	%	%	%	%	%	%	1000 CAPITA	
<b>CATEGORY 1</b>																
Sydney City Council .....	\$ 328.84	59.54	4.75	2.88	3.18	0.17	29.48	7.75	1.84	9.45	125.35	10.69	2.46	10.78	4.91	
<b>Category Average .....</b>	<b>328.84</b>	<b>59.54</b>	<b>4.75</b>	<b>2.88</b>	<b>3.18</b>	<b>0.17</b>	<b>29.48</b>	<b>7.75</b>	<b>1.84</b>	<b>9.45</b>	<b>125.35</b>	<b>10.69</b>	<b>2.46</b>	<b>10.78</b>	<b>4.91</b>	
<b>CATEGORY 2</b>																
Burwood Council .....	546.53	41.71	34.02	4.00	9.35	6.78	4.14	10.69	2.46	10.78	4.91	10.30	0.59	11.66	6.50	
Concord Council .....	600.00	60.05	21.38	2.18	9.06	0.03	7.30	10.30	0.59	11.66	6.50	9.61	1.06	6.07	4.78	
Hunters Hill, The Council of the Municipality of .....	835.89	64.73	9.25	1.94	11.03	0.42	12.63	9.61	1.06	6.07	4.78	9.50	0.77	10.36	4.76	
Mosman Municipal Council .....	657.82	54.88	17.43	2.14	6.14	0.23	19.18	9.50	0.77	10.36	4.76	8.80	1.80	5.28	5.12	
Strathfield Municipal Council .....	554.25	53.27	15.77	5.41	9.02	4.56	11.97	8.80	1.80	5.28	5.12	<b>9.79</b>	<b>1.32</b>	<b>9.67</b>	<b>5.22</b>	
<b>Category Average .....</b>	<b>618.53</b>	<b>53.14</b>	<b>21.22</b>	<b>3.28</b>	<b>8.55</b>	<b>2.76</b>	<b>11.05</b>	<b>9.79</b>	<b>1.32</b>	<b>9.67</b>	<b>5.22</b>	<b>8.22</b>	<b>1.69</b>	<b>9.16</b>	<b>4.10</b>	
<b>CATEGORY 3</b>																
Ashtfield, The Council of the Municipality of .....	518.63	48.50	17.44	1.57	12.17	3.25	17.07	8.22	1.69	9.16	4.10	7.99	1.41	13.57	5.31	
Auburn Council .....	415.11	55.30	14.38	2.47	13.15	6.15	8.55	7.99	1.41	13.57	5.31	14.68	1.87	6.12	9.36	
Botany Bay, The Council of the City of .....	444.15	59.63	17.28	2.98	13.46	0.00	6.65	14.68	1.87	6.12	9.36	8.70	0.80	11.00	3.79	
Drummoyne Council .....	530.08	53.63	15.14	3.71	14.00	2.90	10.62	8.70	0.80	11.00	3.79	Nil	4.42	Nil	4.94	
Hurstville City Council .....	608.53	57.84	14.64	7.49	12.19	0.22	7.62	Nil	4.42	Nil	4.94	5.00	2.12	0.02	4.27	
Kogarah Municipal Council .....	534.56	50.85	14.40	7.03	11.48	3.60	12.64	11.49	1.20	5.90	5.80	11.49	1.20	5.90	5.80	
Lane Cove Council .....	613.67	61.55	17.72	3.22	10.00	3.10	4.42	9.54	1.07	7.44	8.55	8.94	1.24	10.01	8.05	
Leichhardt Municipal Council .....	600.99	57.47	21.57	1.88	12.64	1.64	4.80	8.33	3.43	0.14	6.78	8.33	3.43	0.14	6.78	
Manly Council .....	671.47	54.78	19.97	3.29	11.02	1.29	9.65	9.16	1.24	6.55	6.11	9.16	1.24	6.55	6.11	
North Sydney Council .....	333.69	34.27	29.97	4.80	8.13	9.83	13.00	Nil	3.66	Nil	11.97	Nil	3.66	Nil	11.97	
Pitwater Council .....	718.62	52.79	21.67	2.06	10.61	6.04	6.83	9.51	2.61	7.95	6.71	9.51	2.61	7.95	6.71	
South Sydney City Council .....	339.70	54.52	15.11	5.97	5.83	5.32	13.25	5.81	0.97	6.32	6.67	5.81	0.97	6.32	6.67	
Waverley Council .....	423.45	42.80	31.27	4.92	12.89	3.05	5.07	9.39	1.40	2.80	7.10	9.39	1.40	2.80	7.10	
Willoughby City Council .....	465.67	47.48	22.54	4.02	8.67	7.20	10.09	8.76	2.22	4.51	6.87	8.76	2.22	4.51	6.87	
Woollahra Municipal Council .....	602.11	50.49	28.94	4.59	6.61	1.01	8.36	<b>51.37</b>	<b>20.71</b>	<b>4.29</b>	<b>10.03</b>	<b>4.08</b>	<b>9.51</b>	<b>8.76</b>	<b>6.87</b>	
<b>Category Average .....</b>	<b>510.34</b>	<b>51.37</b>	<b>20.71</b>	<b>4.29</b>	<b>10.03</b>	<b>4.08</b>	<b>9.51</b>	<b>8.76</b>	<b>2.22</b>	<b>4.51</b>	<b>6.87</b>	<b>8.76</b>	<b>2.22</b>	<b>4.51</b>	<b>6.87</b>	

FINANCIAL AND CORPORATE

COUNCIL	AVERAGE RATE PER RESIDENTIAL ASSESSMENT	SOURCES OF TOTAL REVENUE							AVERAGE INTEREST RATE PAID	CURRENT RATIO	DEBT SERVICE RATIO	STAFF PER 1000 CAPITA
		RATES	USER CHARGES	INTEREST	GRANTS & CONTRIBUTIONS	OTHER REVENUE	DONATIONS	REVENUE				
<b>CATEGORY 4</b>	<b>\$</b>	<b>%</b>	<b>%</b>	<b>%</b>	<b>%</b>	<b>%</b>	<b>%</b>	<b>%</b>	<b>%</b>	<b>%</b>	<b>%</b>	<b>RATIO</b>
Holroyd City Council .....	497.06	49.76	14.64	2.15	17.05	5.50	10.90	9.42	1.12	7.32	4.85	
Ku-ring-gai Municipal Council .....	700.95	51.96	21.39	2.90	12.79	1.98	8.98	9.61	2.03	8.08	5.23	
Marrickville Council .....	490.21	54.59	15.56	1.49	20.29	0.44	7.63	8.75	0.92	8.97	6.32	
Randwick City Council .....	584.03	51.02	29.66	3.71	10.12	0.92	4.57	9.72	0.79	8.77	4.53	
Rockdale City Council .....	510.58	51.95	16.59	2.14	15.17	6.40	7.75	8.95	1.13	7.65	3.58	
Ryde City Council .....	455.78	44.93	14.29	3.48	7.24	1.54	28.52	9.74	1.89	15.16	3.88	
<b>Category Average .....</b>	<b>545.58</b>	<b>50.53</b>	<b>19.01</b>	<b>2.73</b>	<b>13.32</b>	<b>2.53</b>	<b>11.89</b>	<b>9.39</b>	<b>1.35</b>	<b>9.51</b>	<b>4.70</b>	
<b>CATEGORY 5</b>												
Bankstown City Council .....	622.09	55.12	11.34	3.11	10.92	4.77	14.74	6.77	0.95	12.65	5.28	
Blacktown City Council .....	547.81	41.10	11.57	3.20	17.81	11.39	14.93	9.59	1.40	18.42	4.76	
Canterbury City Council .....	521.26	53.68	19.94	3.93	17.52	2.51	2.42	10.91	1.62	7.34	4.18	
Fairfield City Council .....	512.47	40.57	17.37	3.08	22.89	6.52	9.57	8.71	1.41	14.23	3.63	
Parramatta City Council .....	411.03	54.60	13.04	2.54	13.95	5.10	10.77	9.13	0.98	11.97	4.70	
Sutherland Shire Council .....	726.27	57.83	19.26	3.83	11.37	0.91	6.80	7.61	0.94	12.01	5.17	
Warringah Council .....	580.88	49.62	21.02	2.83	9.90	3.98	12.65	9.61	1.21	3.74	5.44	
<b>Category Average .....</b>	<b>569.38</b>	<b>49.32</b>	<b>15.61</b>	<b>3.22</b>	<b>15.22</b>	<b>5.70</b>	<b>10.94</b>	<b>8.43</b>	<b>1.18</b>	<b>13.34</b>	<b>4.72</b>	

# FINANCIAL AND CORPORATE

COUNCIL	AVERAGE RATE PER RESIDENTIAL ASSESSMENT						SOURCES OF TOTAL REVENUE						AVERAGE CURRENT DEBT STAFF PER 1000 CAPITA				
	RATES	USER CHARGES	INTEREST	GRANTS	CONTRIBUTIONS & DONATIONS	OTHER REVENUE	%	RATIO	%	RATIO	%	RATIO	INTEREST RATE PAID	SERVICE RATIO	CAPITA		
<b>CATEGORY 6</b>																	
Armidale City Council	34.71	40.65	3.42	12.99	0.73	7.50	13.24	1.76	5.85	6.18	10.31	2.92	12.99	7.51			
Bathurst City Council	43.57	17.26	5.88	13.43	5.51	14.35	10.31	2.92	12.99	7.51	11.98	1.30	8.99	8.14			
Bega Valley Shire Council	45.19	20.08	3.43	23.81	5.78	1.71	6.57	2.75	3.22	8.17	6.57	2.75	3.22	8.17			
Broken Hill City Council	39.63	21.22	1.40	28.59	1.99	7.18	8.34	1.25	11.46	7.88	8.34	1.25	11.46	7.88			
Byron Shire Council	9.51	25.49	3.94	9.36	47.20	4.50	7.70	2.50	20.66	6.15	7.70	2.50	20.66	6.15			
Casino Council	32.14	23.98	2.37	13.64	23.41	4.46	8.87	1.64	11.74	6.23	8.87	1.64	11.74	6.23			
Deniliquin Council	39.75	15.10	2.91	34.87	0.83	6.54	10.22	1.02	20.14	9.42	10.22	1.02	20.14	9.42			
Eurobodalla Shire Council	34.49	27.59	2.92	17.01	8.75	9.25	10.61	1.13	15.10	7.22	10.61	1.13	15.10	7.22			
Glen Innes Municipal Council	27.02	20.13	2.70	36.26	2.17	11.72	10.00	1.00	17.17	6.50	10.00	1.00	17.17	6.50			
Goulburn City Council	56.14	20.37	2.69	12.96	1.43	6.41	9.95	2.94	14.60	8.03	9.95	2.94	14.60	8.03			
Grafton City Council	48.98	15.16	3.00	12.70	17.16	3.00	11.84	1.37	15.57	8.61	11.84	1.37	15.57	8.61			
Great Lakes Council	50.52	19.13	4.91	20.68	2.03	2.73	10.96	2.00	14.54	8.18	10.96	2.00	14.54	8.18			
Greater Lithgow City Council	48.19	12.97	3.47	21.32	3.31	10.74	11.17	3.31	8.69	6.35	11.17	3.31	8.69	6.35			
Griffith City Council	49.51	22.52	4.44	14.04	1.59	7.90	9.22	0.99	17.96	8.40	9.22	0.99	17.96	8.40			
Kempsey Shire Council	38.72	14.98	2.44	23.71	4.85	15.30	9.13	0.89	9.18	9.07	9.13	0.89	9.18	9.07			
Kiama, The Council of the Municipality of	30.32	27.47	1.85	19.61	5.40	15.35	7.22	1.46	7.95	9.26	7.22	1.46	7.95	9.26			
Queanbeyan City Council	60.15	16.59	4.11	14.97	1.03	3.15	<b>9.98</b>	<b>1.64</b>	<b>12.88</b>	<b>7.90</b>							
<b>Category Average</b>	<b>39.58</b>	<b>21.50</b>	<b>3.52</b>	<b>17.71</b>	<b>10.08</b>	<b>7.61</b>											

FINANCIAL AND CORPORATE

COUNCIL	AVERAGE RATE PER RESIDENTIAL ASSESSMENT	SOURCES OF TOTAL REVENUE							AVERAGE INTEREST RATE PAID	CURRENT RATIO	DEBT SERVICE RATIO	STAFF PER 1000 CAPITA
		RATES	USER CHARGES	INTEREST	GRANTS & CONTRIBUTIONS	OTHER REVENUE	OTHER REVENUE	% RATIO				
<b>CATEGORY 7</b>	<b>\$</b>	<b>%</b>	<b>%</b>	<b>%</b>	<b>%</b>	<b>%</b>	<b>%</b>	<b>%</b>	<b>%</b>	<b>%</b>	<b>%</b>	<b>%</b>
Albury City Council	652.66	56.87	12.07	3.07	12.83	3.20	11.95	8.93	1.69	13.11	8.32	9.97
Ballina Shire Council	357.84	26.86	25.86	2.95	15.79	17.48	11.06	9.97	2.93	13.91	5.86	6.29
Cessnock City Council	494.89	42.55	8.50	1.90	17.92	0.12	29.01	6.29	1.36	6.50	5.10	8.15
Coffs Harbour City Council	478.35	36.30	19.43	4.15	20.62	9.59	9.91	8.15	3.98	11.11	7.19	7.28
Dubbo City Council	453.83	40.63	15.05	3.90	13.14	5.69	21.59	7.28	2.50	12.56	7.01	10.27
Greater Taree City Council	387.70	48.73	11.41	2.54	22.82	1.07	13.43	10.27	1.04	22.26	4.83	9.66
Hastings Council	404.43	41.97	11.23	6.47	18.24	16.08	6.01	9.66	1.80	17.17	5.94	7.60
Lismore City Council	528.74	27.08	30.30	3.13	14.32	16.38	8.79	7.60	2.36	8.22	6.96	8.07
Maitland City Council	431.14	40.03	9.25	2.79	26.11	4.69	17.13	8.07	1.59	11.22	6.06	8.72
Orange City Council	683.80	50.95	15.52	2.04	15.79	3.91	11.79	8.72	0.93	19.94	8.30	11.11
Port Stephens Council	529.19	30.39	18.24	2.72	21.13	7.78	19.74	11.11	2.75	2.78	8.12	10.23
Shellharbour City Council	529.91	42.56	17.78	4.79	17.29	5.01	12.57	9.49	2.68	9.29	4.35	9.49
Tamworth City Council	518.58	23.58	43.29	2.90	12.09	3.70	14.44	9.49	1.85	15.23	6.85	7.59
Tweed Shire Council	421.10	33.05	15.64	4.54	16.46	23.86	16.45	7.59	2.62	18.35	6.97	9.35
Wagga Wagga City Council	428.74	25.46	41.31	2.97	11.19	4.73	14.34	10.74	2.28	4.97	6.99	10.74
Wingecarribee Shire Council	452.98	24.84	33.49	3.61	24.41	7.74	5.91	10.74	3.65	14.04	7.30	8.91
<b>Category Average</b>	<b>479.39</b>	<b>35.58</b>	<b>21.95</b>	<b>3.55</b>	<b>16.94</b>	<b>9.47</b>	<b>12.51</b>	<b>8.91</b>	<b>2.19</b>	<b>12.31</b>	<b>6.60</b>	
<b>CATEGORY 8</b>												
Shoalhaven City Council	415.82	53.16	27.51	2.86	11.74	0.15	4.58	11.82	1.18	23.85	7.44	11.82
<b>Category Average</b>	<b>415.82</b>	<b>53.16</b>	<b>27.51</b>	<b>2.86</b>	<b>11.74</b>	<b>0.15</b>	<b>4.58</b>	<b>11.82</b>	<b>1.18</b>	<b>23.85</b>	<b>7.44</b>	
<b>CATEGORY 9</b>												
Lake Macquarie City Council	539.36	36.93	11.28	2.57	15.35	18.36	15.51	10.72	1.83	9.99	4.50	6.07
Newcastle City Council	520.54	40.71	19.12	3.87	18.03	10.88	7.39	6.07	3.06	7.18	7.14	9.64
Wollongong City Council	634.97	51.13	19.64	1.98	18.49	4.42	4.34	9.64	1.06	7.06	5.00	10.17
<b>Category Average</b>	<b>566.88</b>	<b>43.22</b>	<b>16.77</b>	<b>2.77</b>	<b>17.33</b>	<b>10.98</b>	<b>8.92</b>	<b>10.17</b>	<b>1.38</b>	<b>8.32</b>	<b>5.41</b>	

# FINANCIAL AND CORPORATE

COUNCIL	AVERAGE RATE PER RESIDENTIAL ASSESSMENT		SOURCES OF TOTAL REVENUE								AVERAGE INTEREST RATE PAID	CURRENT RATIO	DEBT SERVICE RATIO	STAFF PER 1000 CAPITA
	\$	%	RATES	USER CHARGES	INTEREST	GRANTS	CONTRIBUTIONS & DONATIONS	OTHER REVENUE	%	%	%	%	%	%
<b>CATEGORY 10</b>														
Camden Council .....	652.23		34.19	8.99	5.82	10.30	1.70	39.00	8.60	1.24	15.20	6.49		
<b>Category Average .....</b>	<b>652.23</b>		<b>34.19</b>	<b>8.99</b>	<b>5.82</b>	<b>10.30</b>	<b>1.70</b>	<b>39.00</b>	<b>8.60</b>	<b>1.24</b>	<b>15.20</b>	<b>6.49</b>		
<b>CATEGORY 11</b>														
Hawkesbury City Council .....	414.15		30.20	21.25	4.72	20.98	7.72	15.13	10.01	2.33	7.68	4.41		
Wollondilly Shire Council .....	441.00		35.49	20.04	3.80	27.94	5.80	6.93	11.60	3.38	7.85	4.90		
<b>Category Average .....</b>	<b>426.26</b>		<b>30.20</b>	<b>21.24</b>	<b>4.72</b>	<b>20.99</b>	<b>7.72</b>	<b>15.12</b>	<b>10.02</b>	<b>2.33</b>	<b>7.68</b>	<b>4.59</b>		
<b>CATEGORY 12</b>														
Blue Mountains City Council .....	650.43		51.76	18.74	1.46	18.95	2.86	6.23	9.23	1.17	6.49	6.25		
Liverpool City Council .....	526.34		39.42	12.80	4.83	14.15	15.18	13.62	9.94	1.54	10.00	4.67		
Wyong Shire Council .....	526.07		21.58	35.82	2.14	16.08	18.94	5.44	9.08	0.47	24.19	5.47		
<b>Category Average .....</b>	<b>560.76</b>		<b>32.05</b>	<b>26.19</b>	<b>2.79</b>	<b>16.04</b>	<b>15.01</b>	<b>7.92</b>	<b>9.24</b>	<b>0.85</b>	<b>16.24</b>	<b>5.38</b>		
<b>CATEGORY 13</b>														
Baulkham Hills, The Council of the Shire of .....	673.69		56.38	15.98	6.11	13.03	0.18	8.32	9.71	1.56	8.39	3.78		
Campbelltown City Council .....	493.70		41.52	20.06	2.91	22.19	7.90	5.42	9.03	1.12	17.91	4.90		
Gosford City Council .....	447.32		19.97	39.36	3.91	10.45	20.51	5.80	9.03	1.36	27.06	6.01		
Hornsby, The Council of the Shire of .....	600.04		54.54	18.90	3.07	10.65	3.10	9.74	7.63	1.98	3.10	3.79		
Penrith City Council .....	480.66		30.51	14.42	2.08	17.12	23.67	12.20	8.83	1.23	14.26	5.20		
<b>Category Average .....</b>	<b>528.50</b>		<b>34.74</b>	<b>24.82</b>	<b>3.44</b>	<b>14.33</b>	<b>14.59</b>	<b>8.08</b>	<b>8.98</b>	<b>1.40</b>	<b>16.49</b>	<b>4.77</b>		

FINANCIAL AND CORPORATE

COUNCIL	AVERAGE RATE PER RESIDENTIAL ASSESSMENT	SOURCES OF TOTAL REVENUE							AVERAGE INTEREST RATE PAID	CURRENT RATIO	DEBT SERVICE RATIO	STAFF PER 1000 CAPITA
		RATES	USER CHARGES	INTEREST	GRANTS CONTRIBUTIONS & DONATIONS	OTHER REVENUE	%	RATIO				
<b>CATEGORY 14</b>	<b>\$</b>	<b>%</b>	<b>%</b>	<b>%</b>	<b>%</b>	<b>%</b>	<b>%</b>	<b>%</b>	<b>%</b>	<b>%</b>	<b>%</b>	<b>%</b>
Bellingen Shire Council	460.30	30.00	14.04	2.90	38.86	10.00	4.20	8.64	2.21	14.87	7.30	10.63
Dungog Shire Council	306.76	32.43	20.24	2.32	34.51	1.87	8.63	10.63	1.64	18.75	7.41	9.57
Hume Shire Council	378.28	36.54	6.63	3.36	26.98	22.74	3.75	10.36	3.42	6.07	1.18	10.36
Richmond River Shire Council	215.62	11.35	51.82	5.29	22.84	3.69	5.01	7.97	7.08	0.75	14.05	7.97
Ulmarra Shire Council	334.79	28.88	25.29	2.94	37.51	1.86	3.52	7.21	1.93	14.52	6.16	7.21
Yarrowlumla Shire Council	493.61	36.76	2.03	3.87	22.91	0.30	34.13	8.49	2.82	9.65	5.73	8.49
<b>Category Average</b>	<b>387.60</b>	<b>26.00</b>	<b>25.21</b>	<b>3.73</b>	<b>30.04</b>	<b>6.79</b>	<b>8.16</b>	<b>8.49</b>	<b>2.97</b>	<b>8.24</b>	<b>7.33</b>	<b>8.49</b>
<b>CATEGORY 15</b>												
Conargo Shire Council	211.92	44.16	0.54	7.20	22.76	0.53	24.81	Nil	16.05	Nil	16.99	11.36
Jerilderie Shire Council	103.00	24.00	20.00	4.00	39.00	1.00	12.00	11.36	4.00	7.00	25.00	8.87
Nundle Shire Council	220.18	39.33	3.21	0.38	30.92	Nil	26.16	8.87	4.03	2.55	15.28	9.52
Urana Shire Council	146.12	22.97	3.81	3.26	40.64	0.23	29.09	9.52	3.50	1.46	23.90	Nil
Windouran Shire Council	111.75	35.14	1.91	1.22	26.15	Nil	35.58	Nil	1.48	Nil	46.51	10.50
<b>Category Average</b>	<b>162.22</b>	<b>29.54</b>	<b>8.78</b>	<b>3.49</b>	<b>35.01</b>	<b>0.36</b>	<b>22.83</b>	<b>10.50</b>	<b>4.34</b>	<b>2.98</b>	<b>22.22</b>	<b>10.50</b>

# FINANCIAL AND CORPORATE

COUNCIL	AVERAGE RATE PER RESIDENTIAL ASSESSMENT	SOURCES OF TOTAL REVENUE										AVERAGE INTEREST RATE PAID	CURRENT RATIO	DEBT SERVICE RATIO	STAFF PER 1000 CAPITA	
		RATES	USER CHARGES	INTEREST	GRANTS	CONTRIBUTIONS & DONATIONS	OTHER REVENUE	%	%	%	%					
<b>CATEGORY 16</b>	<b>\$</b>	<b>%</b>	<b>%</b>	<b>%</b>	<b>%</b>	<b>%</b>	<b>%</b>	<b>%</b>	<b>%</b>	<b>%</b>	<b>%</b>	<b>%</b>	<b>%</b>	<b>%</b>	<b>%</b>	<b>%</b>
Balranald Shire Council	140.67	22.80	31.50	1.30	39.20	0.50	4.70	11.30	1.50	7.80	13.00	9.75	1.27	5.06	17.67	
Barraba Shire Council	255.67	22.84	10.20	2.52	33.85	0.60	29.99	9.75	1.27	5.06	17.67	9.56	1.10	10.17	13.36	
Bingara Shire Council	196.22	31.25	1.89	3.96	42.10	0.10	20.70	10.01	1.94	17.30	20.73	10.01	1.94	17.30	20.73	
Bogan Shire Council	122.36	28.40	7.27	2.52	41.12	1.41	19.28	10.86	2.22	10.87	20.32	10.86	2.22	10.87	20.32	
Bombala Council	288.33	20.72	9.66	1.86	13.86	9.11	44.79	10.86	2.22	10.87	20.32	8.68	2.16	7.71	18.32	
Boorowa Council	260.62	26.88	4.39	2.92	52.18	1.07	12.56	8.68	2.16	7.71	18.32	9.88	1.87	8.89	15.42	
Bourke Shire Council	205.08	19.10	16.70	1.70	61.00	1.00	0.50	17.27	1.41	5.78	26.24	9.88	1.87	8.89	15.42	
Brewarrina Shire Council	75.35	10.67	3.35	3.20	73.60	0.30	8.88	11.50	1.81	5.36	23.81	11.50	1.81	5.36	23.81	
Carrathool Shire Council	174.46	23.92	12.92	2.50	28.48	0.30	31.88	10.95	2.83	0.21	14.18	10.95	2.83	0.21	14.18	
Coolah Shire Council	195.18	25.18	5.93	2.96	62.88	1.02	2.03	8.99	0.62	0.21	15.16	8.99	0.62	0.21	15.16	
Coolamon Shire Council	187.88	29.30	9.27	5.96	36.87	0.02	18.57	8.99	0.62	0.21	15.16	0.08	7.89	0.02	13.09	
Copmanhurst Shire Council	287.11	19.23	52.39	1.36	20.82	0.80	5.40	8.99	0.62	0.21	15.16	8.13	0.58	10.40	11.23	
Crookwell Shire Council	283.90	43.81	5.76	2.09	22.32	0.07	25.95	9.90	2.63	5.36	8.27	9.90	2.63	5.36	8.27	
Culcairn Shire Council	208.19	25.71	14.66	3.40	50.39	1.00	4.84	7.73	0.95	12.15	18.70	7.73	0.95	12.15	18.70	
Dumaresq Shire Council	269.29	19.93	41.05	3.52	23.06	4.36	8.08	8.61	1.14	6.24	10.41	8.61	1.14	6.24	10.41	
Evans Shire Council	205.41	25.69	0.35	0.83	41.38	0.95	30.80	9.81	2.46	12.14	15.15	9.81	2.46	12.14	15.15	
Gloucester Shire Council	402.87	34.29	5.35	2.90	28.24	9.97	19.25	7.61	2.54	4.33	12.14	7.61	2.54	4.33	12.14	
Gundagai Shire Council	228.00	37.64	7.90	2.63	31.07	1.51	19.25	6.45	3.63	0.46	20.00	6.45	3.63	0.46	20.00	
Gunning Shire Council	199.28	35.72	2.98	3.13	15.69	39.50	2.98	9.65	3.18	12.04	9.62	9.65	3.18	12.04	9.62	
Guyra Shire Council	246.34	29.72	16.51	2.82	38.54	0.12	12.29	8.45	2.46	1.71	14.11	8.45	2.46	1.71	14.11	
Harden Shire Council	311.65	25.59	6.13	1.18	17.92	2.23	46.95	10.22	3.33	13.27	14.63	10.22	3.33	13.27	14.63	
Hay Shire Council	234.85	37.60	9.73	3.41	45.72	0.85	2.69	8.46	1.90	12.91	15.97	8.46	1.90	12.91	15.97	
Holbrook Shire Council	296.38	28.45	8.96	1.38	54.17	1.02	6.03	9.88	2.99	7.20	12.30	9.88	2.99	7.20	12.30	
Lockhart Shire Council	160.74	23.41	3.99	3.29	59.26	1.94	8.11	9.99	1.32	13.57	14.61	9.99	1.32	13.57	14.61	
Manilla Shire Council	231.35	29.81	22.42	3.93	35.48	3.04	5.32	9.99	1.32	13.57	14.61	9.99	1.32	13.57	14.61	
Merrivale Shire Council	186.17	26.24	42.67	2.08	18.24	2.66	8.10	9.08	1.47	4.99	20.16	9.08	1.47	4.99	20.16	

(CATEGORY 16 CONTINUED PAGE 24)

FINANCIAL AND CORPORATE

COUNCIL	AVERAGE RATE PER RESIDENTIAL ASSESSMENT	SOURCES OF TOTAL REVENUE							AVERAGE INTEREST RATE PAID	CURRENT RATIO	DEBT SERVICE RATIO	STAFF PER 1000 CAPITA
		RATES %	USER CHARGES %	INTEREST %	GRANTS %	CONTRIBUTIONS & DONATIONS %	OTHER REVENUE %	%				
<b>CATEGORY 16 (CONTINUED)</b>	<b>\$</b>	<b>%</b>	<b>%</b>	<b>%</b>	<b>%</b>	<b>%</b>	<b>%</b>	<b>%</b>	<b>RATIO</b>	<b>%</b>	<b>RATIO</b>	
Murrumbidgee Shire Council	121.88	38.27	23.09	5.26	27.18	1.68	4.52	12.37	3.83	5.84	16.36	
Murrumbidgee Shire Council	195.58	50.05	6.79	1.99	29.41	1.70	10.06	10.60	3.05	6.41	15.40	
Nymboida Shire Council	278.91	13.42	13.15	2.58	27.63	12.80	30.42	10.28	2.73	3.47	10.88	
Oberon Council	215.75	18.97	9.88	3.58	15.17	2.70	49.70	9.49	4.32	3.23	13.96	
Rylstone Shire Council	243.68	31.62	5.94	2.65	54.08	3.32	2.39	9.28	2.59	12.59	15.89	
Severn Shire Council	173.68	28.69	32.16	2.64	24.82	4.02	7.67	8.18	1.84	4.54	18.01	
Tallaganda Shire Council	299.20	32.37	5.29	1.87	24.24	32.84	3.39	8.12	1.28	3.69	22.64	
Tumbarumba Shire Council	219.41	20.45	25.02	2.38	36.19	0.07	15.89	10.27	2.28	0.03	12.83	
Walcha Council	243.79	38.68	6.74	2.27	18.60	0.65	33.06	9.82	3.32	5.23	14.37	
Warren Shire Council	283.51	40.54	30.49	2.88	24.04	0.62	1.43	7.34	2.26	9.30	17.52	
Weddin Shire Council	262.93	19.60	7.30	4.46	25.41	0.09	43.14	Nil	4.35	Nil	13.29	
Yallaroi Shire Council	166.07	41.09	7.45	2.69	42.78	2.63	3.36	10.05	2.13	9.07	23.40	
<b>Category Average</b>	<b>231.29</b>	<b>27.37</b>	<b>14.03</b>	<b>2.68</b>	<b>35.50</b>	<b>3.36</b>	<b>17.06</b>	<b>9.40</b>	<b>2.07</b>	<b>6.75</b>	<b>15.25</b>	

# FINANCIAL AND CORPORATE

COUNCIL	AVERAGE RATE PER RESIDENTIAL ASSESSMENT	SOURCES OF TOTAL REVENUE							AVERAGE INTEREST RATE PAID	CURRENT RATIO	DEBT SERVICE RATIO	STAFF PER 1000 CAPITA
		RATES %	USER CHARGES %	INTEREST %	GRANTS %	CONTRIBUTIONS & DONATIONS %	OTHER REVENUE %	%				
<b>CATEGORY 17</b>	<b>\$</b>	<b>%</b>	<b>%</b>	<b>%</b>	<b>%</b>	<b>%</b>	<b>%</b>	<b>%</b>	<b>RATIO</b>	<b>%</b>	<b>RATIO</b>	
Berrigan Shire Council	332.80	43.28	10.20	2.00	31.40	0.50	12.62	7.34	3.96	8.70	7.57	
Bland Shire Council	286.37	35.92	18.03	3.13	39.24	2.15	1.53	9.50	4.14	4.67	12.94	
Blayney Shire Council	264.66	32.28	21.83	3.30	26.89	1.42	14.28	6.63	3.11	Nil	9.60	
Cooma-Monaro Shire Council	391.33	38.40	17.47	4.52	28.42	2.42	8.77	10.16	3.88	11.87	8.69	
Coonabarabran Shire Council	291.44	40.62	3.81	3.26	34.72	0.87	16.72	8.47	7.49	2.44	8.91	
Coonamble Shire Council	192.96	35.71	11.25	4.41	43.53	0.37	4.73	9.85	3.56	5.50	16.76	
Cootamundra Shire Council	361.82	31.79	13.86	3.00	36.96	1.02	13.37	11.03	3.74	2.27	10.08	
Corowa Shire Council	280.27	32.26	12.16	5.00	29.54	5.45	15.59	10.54	3.97	3.98	8.53	
Gilgandra Shire Council	199.29	28.85	16.82	4.94	40.53	1.34	7.52	9.80	1.56	19.64	10.71	
Junee Shire Council	319.89	26.87	4.44	3.03	20.16	0.50	45.00	25.82	2.01	0.17	10.40	
Lachlan Shire Council	209.11	23.43	11.50	5.54	55.32	0.89	3.32	Nil	7.84	Nil	10.01	
Mulwaree Shire Council	285.82	38.24	11.36	3.80	19.17	2.09	25.34	8.53	2.91	2.42	11.32	
Murray Shire Council	356.56	38.18	4.86	4.12	31.50	3.25	18.07	9.76	2.62	13.81	10.90	
Narrandera Shire Council	314.21	38.21	18.32	3.79	31.10	0.53	8.05	10.55	2.88	11.09	8.21	
Narramine Shire Council	278.51	38.71	5.49	5.24	35.40	0.14	15.02	10.01	4.45	4.18	13.87	
Quirindi Shire Council	363.20	34.86	18.25	2.13	41.18	0.68	2.90	9.90	3.34	8.83	13.55	
Snowy River Shire Council	398.94	18.02	27.56	3.37	40.35	6.12	4.58	7.67	1.16	14.99	15.89	
Temora Shire Council	303.77	25.32	3.04	3.27	30.74	0.71	36.93	10.31	1.61	4.87	10.53	
Tenterfield Shire Council	194.45	31.72	8.19	4.94	52.50	0.99	1.66	11.18	1.25	0.06	10.57	
Uralla Shire Council	357.35	30.51	1.48	2.63	29.02	1.46	34.90	9.75	3.56	9.36	11.09	
Wakool, The Council of the Shire of	228.66	33.82	5.05	3.15	27.29	0.48	30.21	9.53	1.67	10.79	11.26	
Walgett Shire Council	250.05	32.55	8.71	3.48	32.00	6.44	16.82	8.00	3.03	3.85	12.41	
Wellington Council	325.00	30.42	25.23	1.17	17.13	1.33	24.72	9.48	1.23	12.23	10.80	
Wentworth Shire Council	330.01	19.97	7.88	2.11	43.49	0.27	26.28	7.87	1.39	6.20	12.81	
Yass Shire Council	295.79	28.66	23.42	3.75	24.68	1.99	17.50	7.42	3.35	9.12	9.37	
<b>Category Average</b>	<b>303.47</b>	<b>31.69</b>	<b>13.24</b>	<b>3.53</b>	<b>34.12</b>	<b>1.87</b>	<b>15.56</b>	<b>9.30</b>	<b>2.85</b>	<b>6.28</b>	<b>10.85</b>	

FINANCIAL AND CORPORATE

COUNCIL	AVERAGE RATE PER RESIDENTIAL ASSESSMENT	SOURCES OF TOTAL REVENUE						AVERAGE INTEREST RATE PAID	CURRENT RATIO	DEBT SERVICE RATIO	STAFF PER 1000 CAPITA
		RATES %	USER CHARGES %	INTEREST %	GRANTS %	CONTRIBUTIONS & DONATIONS %	OTHER REVENUE %				
<b>CATEGORY 18</b>	<b>\$</b>	<b>%</b>	<b>%</b>	<b>%</b>	<b>%</b>	<b>%</b>	<b>%</b>	<b>%</b>	<b>%</b>	<b>%</b>	<b>%</b>
Cabonne Council	233.64	31.54	12.07	2.76	31.62	2.41	19.60	9.57	1.85	4.41	13.16
Cowra Shire Council	210.33	19.26	33.91	0.43	18.19	0.37	27.84	8.99	1.96	8.41	10.27
Forbes Shire Council	367.34	29.55	20.73	2.02	21.51	0.74	25.45	9.69	2.28	10.21	9.17
Gunnedah Shire Council	365.46	16.92	53.81	2.28	26.31	0.35	0.33	8.09	1.82	5.15	13.44
Inverell Shire Council	443.07	30.63	9.70	3.90	26.04	3.72	26.01	8.14	2.20	12.62	10.13
Kyogle Council	268.75	22.55	17.96	1.74	52.01	0.02	5.72	7.07	0.68	1.78	13.00
Leeton Shire Council	389.82	45.32	13.93	3.55	26.26	4.09	6.85	9.26	2.95	9.08	6.03
Maclean Council	461.32	35.92	19.17	4.23	25.16	9.54	5.99	8.70	1.89	9.52	7.14
Moree Plains Shire Council	391.64	39.78	14.13	1.70	25.74	1.03	17.62	11.17	3.15	10.38	14.21
Mudgee Shire Council	394.73	44.84	8.36	2.54	24.56	0.78	18.92	9.83	1.76	10.47	9.44
Muswellbrook Shire Council	346.54	30.76	13.71	4.76	21.50	5.41	23.86	10.25	3.16	9.14	4.90
Nambucca Shire Council	388.44	40.18	11.47	4.82	30.79	6.40	6.34	7.67	2.53	12.43	5.29
Narrabri Shire Council	487.92	41.23	7.86	3.17	43.54	0.27	3.93	8.62	3.04	6.25	9.31
Parkes Shire Council	328.47	23.28	29.44	2.69	36.66	4.05	3.89	8.87	2.19	8.53	9.12
Parry Shire Council	285.34	26.75	13.66	3.40	48.95	4.84	2.40	8.92	1.62	9.79	7.98
Score Shire Council	362.49	35.40	28.72	3.65	25.58	3.82	2.83	13.82	3.06	5.70	8.62
Singleton Shire Council	324.32	42.31	12.45	3.45	14.95	13.60	13.24	9.52	1.99	0.17	7.73
Turnut Shire Council	246.69	27.44	6.92	1.69	35.01	0.99	27.95	10.10	1.12	6.47	10.42
Young Shire Council	333.56	44.23	9.05	2.24	38.58	1.04	4.86	9.09	2.39	6.20	8.35
<b>Category Average</b>	<b>354.10</b>	<b>31.84</b>	<b>20.15</b>	<b>2.82</b>	<b>29.45</b>	<b>3.14</b>	<b>12.60</b>	<b>9.22</b>	<b>2.14</b>	<b>7.77</b>	<b>9.24</b>

## FINANCIAL AND CORPORATE

COUNCIL	AVERAGE RATE PER RESIDENTIAL ASSESSMENT	SOURCES OF TOTAL REVENUE							AVERAGE INTEREST RATE PAID	CURRENT RATIO	DEBT SERVICE RATIO	STAFF PER 1000 CAPITA
		RATES	USER CHARGES	INTEREST	GRANTS CONTRIBUTIONS & DONATIONS	OTHER REVENUE	%	%				
CATEGORY 19	\$ Nil	%	%	%	%	%	%	%	%	RATIO	%	RATIO
CATEGORY 20												
Nil												
27												
CATEGORY 21												
Central Darling Shire Council .....	160.64	6.85	8.33	1.74	31.20	Nil	51.88	11.79	2.04	2.29	19.22	
<i>Category Average</i> .....	<b>160.64</b>	<b>6.85</b>	<b>8.33</b>	<b>1.74</b>	<b>31.20</b>	<b>Nil</b>	<b>51.88</b>	<b>11.79</b>	<b>2.04</b>	<b>2.29</b>	<b>19.22</b>	
CATEGORY 22												
Cobar Shire Council .....	226.91	18.78	11.17	2.59	33.28	4.26	29.92	13.56	1.99	9.03	18.81	
<i>Category Average</i> .....	<b>226.91</b>	<b>18.78</b>	<b>11.17</b>	<b>2.59</b>	<b>33.28</b>	<b>4.26</b>	<b>29.92</b>	<b>13.56</b>	<b>1.99</b>	<b>9.03</b>	<b>18.81</b>	

**EXPLANATION OF KEY PERFORMANCE INDICATORS - FINANCIAL AND CORPORATE**

**1.1 Average Rate per Residential Assessment**

**Objective** To highlight the level of Councils' residential rates (excluding water and sewerage rates).

**Formula** 
$$\frac{\text{Total Residential Rates Revenue}}{\text{Number of Rateable Residential Properties}}$$

**1.2 Sources of Total Revenue**

**Objective** To assess the degree of dependence on alternative sources of revenue - both operating and capital.

**Formula** 
$$\frac{X}{\text{Total Revenue}}$$
 (Where X = Rates Revenue, User Charges, Interest, Grants, Contributions and Donations, and Other Revenue)

28

**1.3 Average Interest Rate Paid**

**Objective** To assess the relative cost of Council's loan borrowings.

**Formula** 
$$\frac{\text{Total Interest Expense on Loans}}{(\text{Opening Principal Outstanding} + \text{Closing Principal Outstanding})/2}$$

**1.4 Current Ratio**

**Objective** To monitor whether a Council has sufficient liquidity to meet its short term obligations and avoid a cash shortfall after allowing for funds earmarked for specific purposes.

**Formula** 
$$\frac{\text{Current Assets Less Current External Restrictions Not Included in Current Liabilities}}{\text{Current Liabilities}}$$

## EXPLANATION OF KEY PERFORMANCE INDICATORS - FINANCIAL AND CORPORATE

### 1.5 Debt Service Ratio

**Objective** To measure the extent of the impact of debt service on the operating revenue of Council.

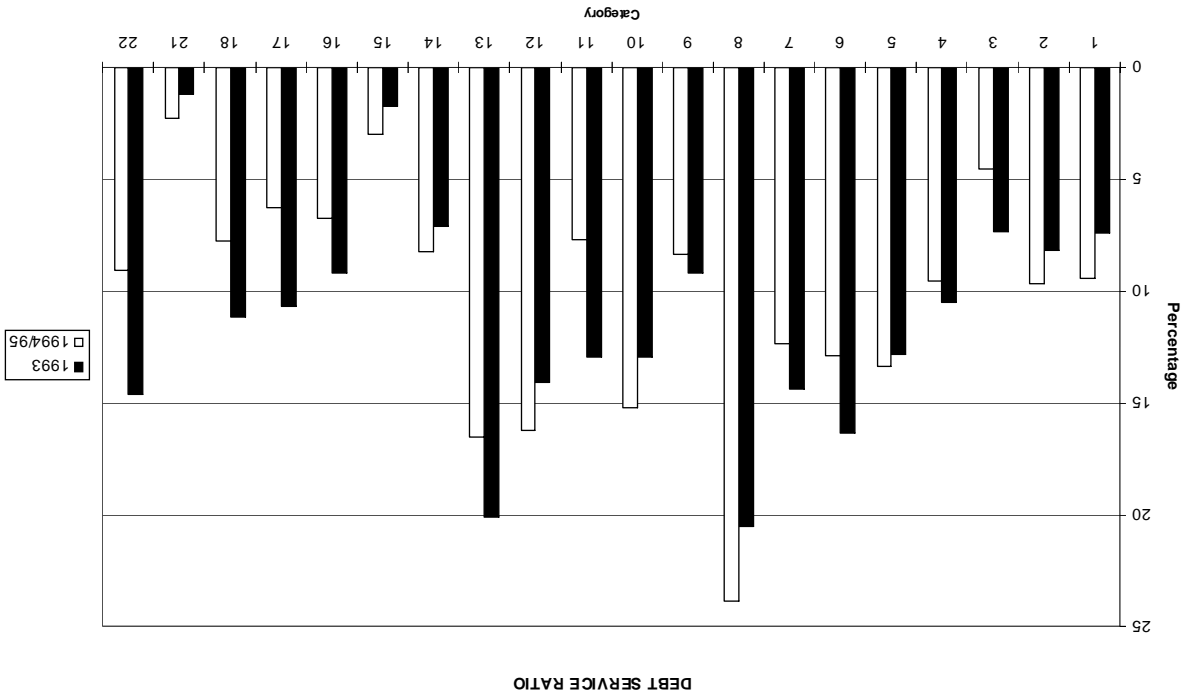
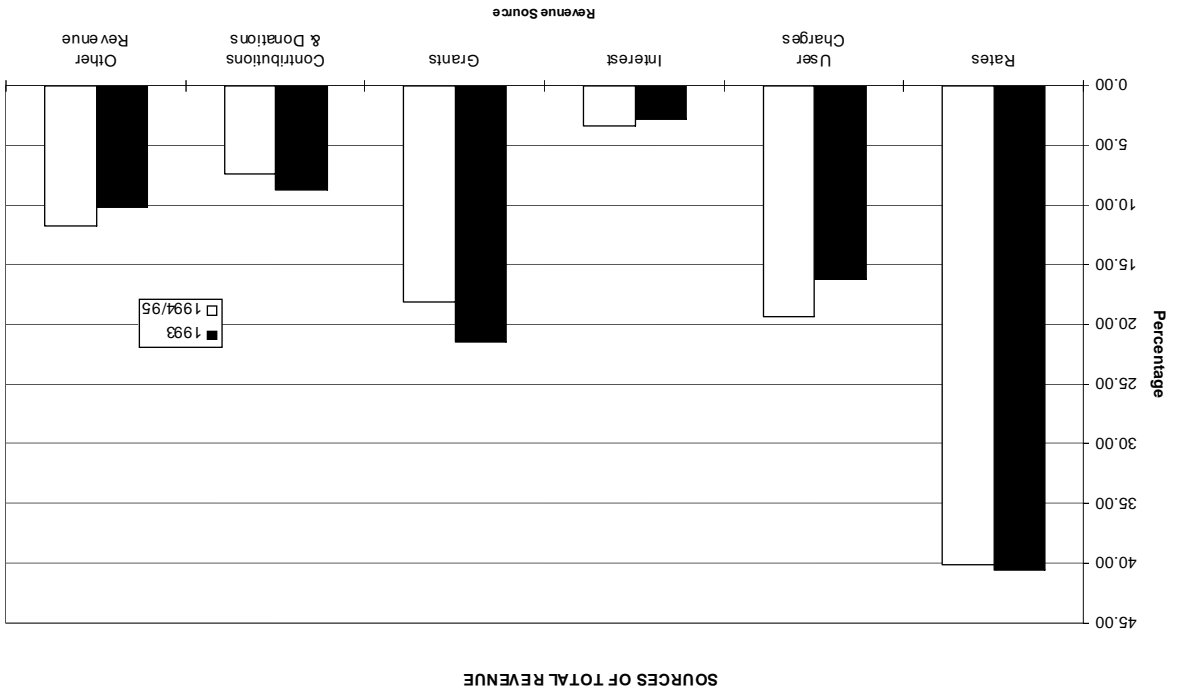
**Formula** 
$$\frac{\text{Net Debt Service Cost (Principal and Interest)}}{\text{Operating Revenue}}$$

### 1.6 Staff per 1,000 Capita

**Objective** To highlight the ratio of staff to population numbers.

**Formula** 
$$\frac{\text{Average Full Time Equivalent Staff} \times 1000 \text{ (excluding trading undertakings)}}{\text{Total Permanent Population within Council Boundaries}}$$

*Note: The average full time equivalent staff is based on the total number of full or part-time staff on Council's payroll on the last pay day of June 1995.*



## LIBRARY SERVICES

COUNCIL	EXPENDITURE		ISSUES	
	PER CAPITA	PER CAPITA	PER CAPITA	PER CAPITA
<b>CATEGORY 1</b>				
Sydney City Council .....		\$ 351.41		99.82
<b>Category Average .....</b>		<b>351.41</b>		<b>99.82</b>

<b>CATEGORY 2</b>				
Burrwood Council .....		43.67		5.85
Concord Council .....		15.35		7.69
Hunters Hill, The Council of the Municipality of .....		18.91		8.26
Mosman Municipal Council .....		39.88		13.51
Strathfield Municipal Council .....		30.11		7.38
<b>Category Average .....</b>		<b>31.50</b>		<b>8.53</b>

<b>CATEGORY 3</b>				
Ashtfield, The Council of the Municipality of .....		20.20		5.66
Auburn Council .....		27.26		8.80
Botany Bay, The Council of the City of .....		25.28		6.34
Drummoyne Council .....		17.05		4.38
Hurstville City Council .....		38.32		10.93
Kogarah Municipal Council .....		29.15		6.18
Lane Cove Council .....		42.40		14.40
Leichhardt Municipal Council .....		24.96		6.12
Manly Council .....		29.17		8.62
North Sydney Council .....		37.28		10.64
Pittwater Council .....		23.62		7.83
South Sydney City Council .....		14.28		3.98
Waverley Council .....		36.53		9.84
Willoughby City Council .....		34.54		17.58
Woollahra Municipal Council .....		23.54		9.38
<b>Category Average .....</b>		<b>28.10</b>		<b>8.67</b>

N/A = Data not available for Council

## DOMESTIC WASTE MANAGEMENT & RECYCLING SERVICES

COUNCIL	AVERAGE CHARGE FOR DOMESTIC WASTE MANAGEMENT SERVICES PER RESIDENTIAL PROPERTY		COLLECTION COSTS PER SERVICE FOR DOMESTIC WASTE MANAGEMENT		KCA RECYCLABLES: KILOGRAMS PER CAPITA	KCA DOMESTIC WASTE: KILOGRAMS PER CAPITA
	\$	\$	\$	\$		
Burrwood Council .....	125.93	71.71	89.24	279.92		
Concord Council .....	141.05	96.96	68.11	316.08		
Hunters Hill, The Council of the Municipality of .....	100.00	71.81	58.04	173.00		
Mosman Municipal Council .....	94.64	87.88	112.40	299.63		
Strathfield Municipal Council .....	133.80	71.73	70.14	318.68		
<b>Category Average .....</b>	<b>119.19</b>	<b>81.15</b>	<b>82.60</b>	<b>288.63</b>		

Ashtfield, The Council of the Municipality of .....	123.49	70.37	53.29	304.51		
Auburn Council .....	111.30	70.60	26.99	292.42		
Botany Bay, The Council of the City of .....	117.84	63.13	50.80	281.53		
Drummoyne Council .....	108.00	29.81	78.15	285.04		
Hurstville City Council .....	83.82	58.04	74.13	330.08		
Kogarah Municipal Council .....	130.50	77.58	88.07	323.74		
Lane Cove Council .....	134.64	103.47	90.00	154.00		
Leichhardt Municipal Council .....	142.95	63.56	93.26	326.40		
Manly Council .....	128.85	128.68	127.85	187.55		
North Sydney Council .....	99.27	74.14	125.33	214.96		
Pittwater Council .....	108.43	43.42	87.00	185.65		
South Sydney City Council .....	102.05	39.39	67.04	268.12		
Waverley Council .....	142.28	149.97	88.32	324.31		
Willoughby City Council .....	110.59	70.65	85.77	362.35		
Woollahra Municipal Council .....	162.17	48.66	105.57	384.16		
<b>Category Average .....</b>	<b>120.02</b>	<b>61.80</b>	<b>82.35</b>	<b>288.41</b>		

LIBRARY SERVICES

DOMESTIC WASTE MANAGEMENT & RECYCLING SERVICES

COUNCIL	EXPENDITURE		ISSUES	
	PER CAPITA	PER CAPITA	PER CAPITA	PER CAPITA
<b>CATEGORY 4</b>				
Holroyd City Council .....	20.66	3.18		
Ku-ring-gai Municipal Council .....	30.00	9.07		
Marrickville Council .....	30.33	5.30		
Randwick City Council .....	24.72	5.74		
Rockdale City Council .....	20.62	6.48		
Ryde City Council .....	18.08	9.39		
<b>Category Average .....</b>	<b>24.15</b>	<b>6.65</b>		

<b>CATEGORY 5</b>				
Bankstown City Council .....	26.71	7.87		
Blacktown City Council .....	10.97	4.18		
Canterbury City Council .....	22.43	4.56		
Fairfield City Council .....	20.10	4.19		
Parramatta City Council .....	27.88	4.24		
Sutherland Shire Council .....	19.87	8.27		
Warringah Council .....	18.68	8.17		
<b>Category Average .....</b>	<b>20.22</b>	<b>5.87</b>		

N/A = Data not available for Council

	AVERAGE CHARGE FOR		COLLECTION COSTS		KCA RECYCLABLES:		KCA DOMESTIC WASTE:	
	DOMESTIC WASTE MANAGEMENT SERVICES PER RESIDENTIAL PROPERTY	PER RESIDENTIAL PROPERTY	PER SERVICE FOR DOMESTIC WASTE MANAGEMENT	PER RESIDENTIAL PROPERTY	PER KILOGRAMS PER CAPITA	PER KILOGRAMS PER CAPITA	PER KILOGRAMS PER CAPITA	PER KILOGRAMS PER CAPITA
	\$	\$	\$	\$				
	104.93	78.71	41.64	321.28				
	165.35	109.03	103.63	314.61				
	154.48	78.87	46.35	299.99				
	222.13	111.57	61.55	205.02				
	106.96	74.58	60.29	302.25				
	123.53	61.13	42.17	339.48				
	<b>149.01</b>	<b>86.63</b>	<b>61.01</b>	<b>293.06</b>				
	123.56	98.98	36.23	316.57				
	115.69	83.19	36.59	297.01				
	113.56	98.34	50.66	331.62				
	124.51	85.32	33.30	331.45				
	117.21	84.90	42.75	291.01				
	100.08	78.69	68.37	312.57				
	95.59	64.64	120.00	173.00				
	<b>112.74</b>	<b>84.51</b>	<b>52.89</b>	<b>297.41</b>				

## LIBRARY SERVICES

## DOMESTIC WASTE MANAGEMENT & RECYCLING SERVICES

COUNCIL	EXPENDITURE		ISSUES	
	PER CAPITA	PER CAPITA	PER CAPITA	PER CAPITA
<b>CATEGORY 6</b>		<b>\$</b>		
Armidale City Council	24.30	8.71		
Bathurst City Council	23.38	8.09		
Bega Valley Shire Council	14.99	10.33		
Broken Hill City Council	20.47	7.07		
Byron Shire Council	12.03	7.91		
Casino Council	12.02	9.20		
Deniliquin Council	15.04	12.90		
Eurobodalla Shire Council	16.05	9.68		
Glen Innes Municipal Council	17.88	15.53		
Goulburn City Council	23.61	7.02		
Grafton City Council	13.78	10.60		
Great Lakes Council	23.23	15.85		
Greater Lithgow City Council	24.37	4.22		
Griffith City Council	18.23	7.53		
Kempsey Shire Council	14.01	7.75		
Kiama, The Council of the Municipality of	28.96	10.50		
Queanbeyan City Council	25.55	8.52		
<b>Category Average</b>	<b>19.62</b>	<b>9.14</b>		

N/A = Data not available for Council

COUNCIL	AVERAGE CHARGE FOR DOMESTIC WASTE MANAGEMENT SERVICES PER RESIDENTIAL PROPERTY		COLLECTION COSTS PER SERVICE FOR DOMESTIC WASTE MANAGEMENT		KCA RECYCLABLES: KILOGRAMS PER CAPITA		KCA DOMESTIC WASTE: KILOGRAMS PER CAPITA	
	PER RESIDENTIAL PROPERTY	PER RESIDENTIAL PROPERTY	PER RESIDENTIAL PROPERTY	PER RESIDENTIAL PROPERTY	PER RESIDENTIAL PROPERTY	PER RESIDENTIAL PROPERTY	PER RESIDENTIAL PROPERTY	PER RESIDENTIAL PROPERTY
	<b>\$</b>	<b>\$</b>	<b>\$</b>	<b>\$</b>				
Armidale City Council	126.47	69.39	73.94	430.00				
Bathurst City Council	75.00	50.08	73.46	326.27				
Bega Valley Shire Council	96.02	46.65	5.76	832.30				
Broken Hill City Council	86.29	70.82	0.96	375.16				
Byron Shire Council	93.30	45.86	N/A	N/A				
Casino Council	96.64	61.10	Nil	N/A				
Deniliquin Council	112.68	34.82	Nil	334.43				
Eurobodalla Shire Council	49.30	56.37	Nil	539.63				
Glen Innes Municipal Council	65.34	47.18	96.77	230.41				
Goulburn City Council	88.40	49.82	112.87	351.08				
Grafton City Council	71.07	49.61	125.93	407.14				
Great Lakes Council	82.94	88.44	68.94	1066.30				
Greater Lithgow City Council	111.10	51.47	12.21	1216.00				
Griffith City Council	73.28	64.19	75.69	404.24				
Kempsey Shire Council	67.06	52.44	Nil	626.51				
Kiama, The Council of the Municipality of	125.79	86.93	256.84	188.04				
Queanbeyan City Council	131.84	61.38	23.25	347.40				
<b>Category Average</b>	<b>88.72</b>	<b>59.80</b>	<b>69.55</b>	<b>543.27</b>				

LIBRARY SERVICES

DOMESTIC WASTE MANAGEMENT & RECYCLING SERVICES

COUNCIL	EXPENDITURE		ISSUES		AVERAGE CHARGE FOR DOMESTIC WASTE MANAGEMENT SERVICES PER RESIDENTIAL PROPERTY	COLLECTION COSTS PER SERVICE FOR DOMESTIC WASTE MANAGEMENT	KCA RECYCLABLES: PER KILOGRAMS PER CAPITA	KCA DOMESTIC WASTE: PER KILOGRAMS PER CAPITA
	PER CAPITA	PER CAPITA	PER CAPITA	PER CAPITA				
<b>CATEGORY 7</b>								
Albury City Council	27.38	7.24	27.38	7.24	83.47	67.84	28.35	476.72
Ballina Shire Council	18.10	7.97	18.10	7.97	109.22	90.66	45.00	N/A
Cessnock City Council	15.99	6.78	15.99	6.78	114.61	66.27	Nil	349.39
Coffs Harbour City Council	10.53	8.09	10.53	8.09	124.16	73.56	Nil	241.91
Dubbo City Council	20.26	5.24	20.26	5.24	63.96	45.69	Nil	614.87
Greater Taree City Council	10.55	7.38	10.55	7.38	92.22	68.54	44.85	185.50
Hastings Council	20.45	12.87	20.45	12.87	82.00	42.19	79.67	993.50
Lismore City Council	10.07	6.57	10.07	6.57	72.50	39.10	45.48	107.20
Maitland City Council	18.36	4.99	18.36	4.99	85.50	60.41	Nil	372.38
Orange City Council	26.22	8.77	26.22	8.77	88.28	90.23	15.96	558.21
Port Stephens Council	8.32	6.44	8.32	6.44	128.64	30.51	Nil	460.18
Shellharbour City Council	38.40	6.98	38.40	6.98	117.85	56.41	4.66	284.31
Tamworth City Council	21.85	7.30	21.85	7.30	68.35	68.95	96.24	721.00
Tweed Shire Council	9.28	11.69	9.28	11.69	95.86	70.86	9.50	542.80
Wagga Wagga City Council	15.43	5.34	15.43	5.34	93.47	84.02	42.51	734.07
Wingecarribee Shire Council	24.64	8.64	24.64	8.64	119.39	100.72	124.89	122.08
<b>Category Average</b>	<b>18.00</b>	<b>7.72</b>	<b>18.00</b>	<b>7.72</b>	<b>97.81</b>	<b>64.72</b>	<b>46.19</b>	<b>457.91</b>
<b>CATEGORY 8</b>								
Shoalhaven City Council	17.69	15.19	17.69	15.19	113.04	45.85	77.43	284.68
<b>Category Average</b>	<b>17.69</b>	<b>15.19</b>	<b>17.69</b>	<b>15.19</b>	<b>113.04</b>	<b>45.85</b>	<b>77.43</b>	<b>284.68</b>
<b>CATEGORY 9</b>								
Lake Macquarie City Council	23.55	11.72	23.55	11.72	74.91	73.63	11.44	348.23
Newcastle City Council	23.33	13.36	23.33	13.36	93.86	55.59	21.80	337.76
Wollongong City Council	21.83	7.48	21.83	7.48	131.90	42.92	60.90	327.06
<b>Category Average</b>	<b>22.86</b>	<b>10.61</b>	<b>22.86</b>	<b>10.61</b>	<b>100.86</b>	<b>57.04</b>	<b>32.54</b>	<b>337.52</b>

N/A = Data not available for Council

## LIBRARY SERVICES

## DOMESTIC WASTE MANAGEMENT & RECYCLING SERVICES

COUNCIL	EXPENDITURE		ISSUES	
	PER CAPITA	PER CAPITA	PER CAPITA	PER CAPITA
<b>CATEGORY 10</b>		\$		
Camden Council .....	19.18		5.97	
<b>Category Average</b> .....	<b>19.18</b>		<b>5.97</b>	
<b>CATEGORY 11</b>				
Hawkesbury City Council .....	13.44		5.07	
Wollondilly Shire Council .....	12.30		3.06	
<b>Category Average</b> .....	<b>13.02</b>		<b>4.33</b>	
<b>CATEGORY 12</b>				
Blue Mountains City Council .....	15.57		7.78	
Liverpool City Council .....	21.49		5.95	
Wyong Shire Council .....	12.16		8.64	
<b>Category Average</b> .....	<b>16.41</b>		<b>7.45</b>	
<b>CATEGORY 13</b>				
Baulkham Hills, The Council of the Shire of .....	7.38		4.20	
Campbelltown City Council .....	17.65		6.68	
Gosford City Council .....	13.16		7.58	
Hornsby, The Council of the Shire of .....	21.85		6.66	
Penrith City Council .....	16.20		5.27	
<b>Category Average</b> .....	<b>15.46</b>		<b>6.11</b>	

N/A = Data not available for Council

	AVERAGE CHARGE FOR DOMESTIC WASTE MANAGEMENT SERVICES PER RESIDENTIAL PROPERTY	COLLECTION COSTS PER SERVICE FOR DOMESTIC WASTE MANAGEMENT	KCA RECYCLABLES: KILOGRAMS PER CAPITA	KCA DOMESTIC WASTE: KILOGRAMS PER CAPITA
	\$	\$		
Camden Council .....	99.02	80.48	52.91	323.47
<b>Category Average</b> .....	<b>99.02</b>	<b>80.48</b>	<b>52.91</b>	<b>323.47</b>
<b>CATEGORY 11</b>				
Hawkesbury City Council .....	123.29	80.37	42.79	222.06
Wollondilly Shire Council .....	121.90	96.41	21.61	272.89
<b>Category Average</b> .....	<b>122.73</b>	<b>86.23</b>	<b>34.94</b>	<b>240.90</b>
<b>CATEGORY 12</b>				
Blue Mountains City Council .....	91.63	78.21	45.26	458.84
Liverpool City Council .....	101.55	82.36	41.39	311.27
Wyong Shire Council .....	80.08	71.81	35.30	424.70
<b>Category Average</b> .....	<b>90.52</b>	<b>77.11</b>	<b>40.02</b>	<b>392.13</b>
<b>CATEGORY 13</b>				
Baulkham Hills, The Council of the Shire of .....	151.82	113.84	43.28	261.53
Campbelltown City Council .....	107.58	73.07	25.36	313.87
Gosford City Council .....	141.33	97.38	51.93	337.67
Hornsby, The Council of the Shire of .....	152.47	78.90	59.53	285.27
Penrith City Council .....	114.92	92.39	39.69	276.29
<b>Category Average</b> .....	<b>132.00</b>	<b>90.08</b>	<b>43.61</b>	<b>295.36</b>

LIBRARY SERVICES

DOMESTIC WASTE MANAGEMENT & RECYCLING SERVICES

COUNCIL	EXPENDITURE		ISSUES	
	PER CAPITA	PER CAPITA	PER CAPITA	PER CAPITA
<b>CATEGORY 14</b>				
Bellingen Shire Council	15.95	8.31		
Dungog Shire Council	13.19	5.20		
Hume Shire Council	6.97	N/A		
Richmond River Shire Council	12.19	2.91		
Ulmarra Shire Council	10.97	7.03		
Yarrowlumla Shire Council	8.67	N/A		
<b>Category Average</b>	<b>11.76</b>	<b>5.02</b>		

<b>CATEGORY 15</b>				
Conargo Shire Council	17.71	7.15		
Jerrilderie Shire Council	26.00	3.00		
Nundle Shire Council	18.07	4.22		
Urana Shire Council	14.44	4.26		
Windouran Shire Council	47.58	6.98		
<b>Category Average</b>	<b>21.10</b>	<b>4.83</b>		

N/A = Data not available for Council

	AVERAGE CHARGE FOR		COLLECTION COSTS		KCA RECYCLABLES:		KCA DOMESTIC WASTE:	
	DOMESTIC WASTE MANAGEMENT SERVICES PER RESIDENTIAL PROPERTY	PER RESIDENTIAL PROPERTY	PER SERVICE FOR DOMESTIC WASTE MANAGEMENT	PER RESIDENTIAL PROPERTY	PER KILOGRAMS PER CAPITA	PER KILOGRAMS PER CAPITA	PER KILOGRAMS PER CAPITA	PER KILOGRAMS PER CAPITA
	\$	\$	\$	\$				
	125.29	84.75	50.53	104.33				
	93.83	60.69	27.02	164.86				
	98.00	64.09	0.87	116.11				
	95.80	43.99	Nil	N/A				
	100.00	57.32	35.65	178.28				
	145.35	58.44	56.88	165.10				
	<b>108.05</b>	<b>64.42</b>	<b>37.54</b>	<b>141.66</b>				
	N/A	N/A	9.80	N/A				
	71.00	51.00	Nil	194.27				
	N/A	N/A	Nil	N/A				
	87.77	106.09	Nil	226.42				
	N/A	N/A	2.33	N/A				
	<b>79.04</b>	<b>78.02</b>	<b>8.16</b>	<b>208.69</b>				

## LIBRARY SERVICES

## DOMESTIC WASTE MANAGEMENT & RECYCLING SERVICES

COUNCIL	EXPENDITURE		ISSUES	
	PER CAPITA	PER CAPITA	PER CAPITA	PER CAPITA
<b>CATEGORY 16</b>		<b>\$</b>		
Balranald Shire Council	10.93	3.17		
Barraba Shire Council	18.13	11.33		
Bingara Shire Council	18.60	5.14		
Bogan Shire Council	37.20	7.78		
Bombala Council	18.49	5.02		
Boorowa Council	11.06	1.98		
Bourke Shire Council	20.18	4.58		
Brewarrina Shire Council	19.00	1.22		
Carrathool Shire Council	31.11	13.04		
Coolah Shire Council	4.08	1.97		
Coolamon Shire Council	14.32	3.51		
Copmanhurst Shire Council	10.02	10.60		
Crookwell Shire Council	17.63	10.18		
Culcairn Shire Council	13.23	5.58		
Dumaresq Shire Council	20.10	9.08		
Evans Shire Council	8.03	3.93		
Gloucester Shire Council	16.96	11.80		
Gundagai Shire Council	14.47	3.31		
Gunning Shire Council	15.35	7.75		
Guyra Shire Council	11.03	2.60		
Harden Shire Council	13.16	3.09		
Hay Shire Council	12.80	4.91		
Holbrook Shire Council	22.20	13.82		
Lockhart Shire Council	14.31	3.54		
Manilla Shire Council	14.61	3.91		
Merrivale Shire Council	14.52	1.99		

COUNCIL	AVERAGE CHARGE FOR DOMESTIC WASTE MANAGEMENT SERVICES PER RESIDENTIAL PROPERTY		COLLECTION COSTS PER SERVICE FOR DOMESTIC WASTE MANAGEMENT		KCA RECYCLABLES: KILOGRAMS PER CAPITA		KCA DOMESTIC WASTE: KILOGRAMS PER CAPITA	
	PER RESIDENTIAL PROPERTY	PER RESIDENTIAL PROPERTY	PER SERVICE FOR DOMESTIC WASTE MANAGEMENT	PER SERVICE FOR DOMESTIC WASTE MANAGEMENT	PER CAPITA	PER CAPITA	PER CAPITA	PER CAPITA
	<b>\$</b>	<b>\$</b>	<b>\$</b>	<b>\$</b>				
Balranald Shire Council	103.55	61.00	42.03	16.06	Nil	0.66		
Barraba Shire Council	74.39	42.03	36.77	0.28	16.06	140.56		
Bingara Shire Council	48.01	36.77	74.85	Nil	0.28	359.45		
Bogan Shire Council	83.04	74.85	38.36	31.75	Nil	237.80		
Bombala Council	89.39	38.36	56.43	3.81	31.75	114.29		
Boorowa Council	109.61	56.43	150.32	Nil	3.81	57.25		
Bourke Shire Council	96.17	150.32	51.48	Nil	Nil	272.10		
Brewarrina Shire Council	48.54	51.48	49.38	Nil	Nil	N/A		
Carrathool Shire Council	69.41	49.38	78.00	Nil	Nil	110.48		
Coolah Shire Council	78.00	49.74	70.00	Nil	Nil	N/A		
Coolamon Shire Council	84.24	63.13	59.27	0.22	Nil	407.12		
Copmanhurst Shire Council	59.27	25.16	85.00	13.41	0.22	108.38		
Crookwell Shire Council	85.00	76.01	N/A	10.39	13.41	356.57		
Culcairn Shire Council	N/A	N/A	N/A	Nil	10.39	N/A		
Dumaresq Shire Council	N/A	N/A	92.04	36.96	Nil	410.68		
Evans Shire Council	92.04	66.42	130.84	Nil	36.96	968.99		
Gloucester Shire Council	130.84	55.96	49.05	9.77	Nil	213.95		
Gundagai Shire Council	49.05	40.87	97.84	9.78	9.77	152.64		
Gunning Shire Council	97.84	43.26	93.58	Nil	9.78	245.69		
Guyra Shire Council	93.58	73.47	105.00	95.06	Nil	391.85		
Harden Shire Council	105.00	59.55	89.10	26.46	95.06	475.29		
Hay Shire Council	89.10	70.28	63.38	2.87	26.46	151.32		
Holbrook Shire Council	63.38	39.47	88.17	0.40	2.87	120.35		
Lockhart Shire Council	88.17	75.40	76.68		0.40	213.87		
Manilla Shire Council	76.68	61.78						
Merrivale Shire Council								

N/A = Data not available for Council

(CATEGORY 16 CONTINUED PAGE 38)

LIBRARY SERVICES

DOMESTIC WASTE MANAGEMENT & RECYCLING SERVICES

COUNCIL	EXPENDITURE		ISSUES	
	PER CAPITA	PER CAPITA	PER CAPITA	PER CAPITA
<b>CATEGORY 16 (CONTINUED)</b>	<b>\$</b>	<b>\$</b>		
Murrumbidgee Shire Council.....	9.22	17.14		
Murrumbidgee Shire Council.....	11.25	3.17		
Nymboida Shire Council.....	20.04	7.02		
Oberon Council.....	20.18	2.98		
Rylstone Shire Council.....	12.95	5.62		
Seyern Shire Council.....	21.86	10.83		
Tallaganda Shire Council.....	20.75	7.79		
Tumbarumba Shire Council.....	15.88	3.76		
Walcha Council.....	14.94	6.44		
Warren Shire Council.....	43.12	7.81		
Weddin Shire Council.....	10.26	5.06		
Yallaro Shire Council.....	21.45	4.30		
<b>Category Average.....</b>	<b>16.66</b>	<b>6.07</b>		

AVERAGE CHARGE FOR DOMESTIC WASTE MANAGEMENT SERVICES PER RESIDENTIAL PROPERTY	COLLECTION COSTS PER SERVICE FOR DOMESTIC WASTE MANAGEMENT	KCA RECYCLABLES: KILOGRAMS PER CAPITA	KCA DOMESTIC WASTE: KILOGRAMS PER CAPITA
76.76.....	59.10.....	Nil.....	248.18
67.40.....	44.40.....	Nil.....	N/A
81.85.....	47.39.....	19.10.....	204.95
79.38.....	108.23.....	1.41.....	708.00
88.35.....	39.56.....	Nil.....	124.69
62.84.....	62.84.....	8.10.....	288.93
201.18.....	200.39.....	26.40.....	219.00
98.66.....	25.99.....	Nil.....	715.70
85.00.....	55.98.....	Nil.....	N/A
81.60.....	79.20.....	22.25.....	180.80
78.58.....	64.59.....	Nil.....	70.00
48.17.....	48.17.....	Nil.....	579.00
<b>85.23.....</b>	<b>62.45.....</b>	<b>17.09.....</b>	<b>286.97</b>

N/A = Data not available for Council

## LIBRARY SERVICES

## DOMESTIC WASTE MANAGEMENT & RECYCLING SERVICES

COUNCIL	EXPENDITURE		ISSUES	
	PER CAPITA	PER CAPITA	PER CAPITA	PER CAPITA
<b>CATEGORY 17</b>	<b>\$</b>	<b>\$</b>		
Berrigan Shire Council	14.70	5.12		
Bland Shire Council	22.08	4.95		
Blayney Shire Council	7.28	2.03		
Cooma-Monaro Shire Council	16.16	7.57		
Coonabarabran Shire Council	25.49	4.66		
Coonamble Shire Council	21.90	4.54		
Cootamundra Shire Council	15.00	5.19		
Corowa Shire Council	13.72	3.98		
Gilgandra Shire Council	23.01	7.22		
Junee Shire Council	7.41	3.90		
Lachlan Shire Council	29.72	5.23		
Mulwarae Shire Council	9.09	5.15		
Murray Shire Council	4.35	8.23		
Narrandera Shire Council	13.50	5.49		
Narramine Shire Council	20.73	5.80		
Quirindi Shire Council	17.58	5.65		
Snowy River Shire Council	15.21	5.43		
Temora Shire Council	14.01	6.68		
Tenterfield Shire Council	14.34	6.32		
Uralla Shire Council	11.20	3.54		
Wakool, The Council of the Shire of	14.31	4.48		
Walgett Shire Council	13.02	1.57		
Wellington Council	9.35	6.83		
Wentworth Shire Council	15.84	6.19		
Yass Shire Council	16.10	6.20		
<b>Category Average</b>	<b>15.43</b>	<b>5.30</b>		

N/A = Data not available for Council

	AVERAGE CHARGE FOR	COLLECTION COSTS	KCA RECYCLABLES:	KCA DOMESTIC WASTE:
	DOMESTIC WASTE MANAGEMENT SERVICES PER RESIDENTIAL PROPERTY	PER SERVICE FOR DOMESTIC WASTE MANAGEMENT	KILOGRAMS PER CAPITA	KILOGRAMS PER CAPITA
	<b>\$</b>	<b>\$</b>		
Berrigan Shire Council	119.54	46.60	39.51	731.71
Bland Shire Council	86.30	54.78	3.55	328.95
Blayney Shire Council	163.69	59.15	Nil	356.04
Cooma-Monaro Shire Council	84.50	35.29	Nil	442.23
Coonabarabran Shire Council	90.99	102.22	Nil	570.41
Coonamble Shire Council	95.31	66.95	Nil	358.48
Cootamundra Shire Council	81.50	51.96	12.73	424.49
Corowa Shire Council	75.00	62.51	28.68	583.33
Gilgandra Shire Council	104.00	89.97	Nil	175.00
Junee Shire Council	98.66	88.26	Nil	189.64
Lachlan Shire Council	60.05	14.90	2.82	156.61
Mulwarae Shire Council	96.90	60.40	62.71	121.95
Murray Shire Council	98.00	43.42	Nil	394.82
Narrandera Shire Council	126.43	44.63	Nil	667.59
Narramine Shire Council	73.33	45.71	Nil	100.80
Quirindi Shire Council	85.50	65.02	36.45	915.75
Snowy River Shire Council	118.87	37.35	15.21	163.08
Temora Shire Council	55.49	29.55	Nil	427.48
Tenterfield Shire Council	121.12	41.54	Nil	214.28
Uralla Shire Council	69.36	39.03	7.34	46.85
Wakool, The Council of the Shire of	92.46	41.36	33.02	335.31
Walgett Shire Council	75.37	39.08	Nil	N/A
Wellington Council	118.22	118.22	1.57	20.88
Wentworth Shire Council	86.67	78.00	Nil	206.61
Yass Shire Council	106.20	69.78	Nil	626.32
<b>Category Average</b>	<b>94.72</b>	<b>53.29</b>	<b>20.60</b>	<b>363.97</b>

LIBRARY SERVICES

DOMESTIC WASTE MANAGEMENT & RECYCLING SERVICES

COUNCIL	EXPENDITURE PER CAPITA	ISSUES PER CAPITA
<b>CATEGORY 18</b>	<b>\$</b>	
Cabonne Council .....	8.39	3.22
Cowra Shire Council .....	8.53	3.24
Forbes Shire Council .....	9.03	3.10
Gunnedah Shire Council .....	12.57	5.04
Inverell Shire Council .....	18.92	7.64
Kyogle Council .....	12.30	4.76
Leeton Shire Council .....	23.41	8.54
Macleean Council .....	11.38	7.58
Moree Plains Shire Council .....	15.69	4.05
Mudgee Shire Council .....	16.72	10.08
Muswellbrook Shire Council .....	21.91	5.42
Nambucca Shire Council .....	11.01	6.29
Narrabri Shire Council .....	13.39	7.67
Parkes Shire Council .....	24.46	6.93
Parry Shire Council .....	8.30	3.06
Score Shire Council .....	22.85	3.50
Singleton Shire Council .....	21.86	8.30
Turnut Shire Council .....	22.50	6.48
Young Shire Council .....	10.32	5.43
<b>Category Average .....</b>	<b>15.66</b>	<b>6.04</b>

AVERAGE CHARGE FOR DOMESTIC WASTE MANAGEMENT SERVICES PER RESIDENTIAL PROPERTY	COLLECTION COSTS PER SERVICE FOR DOMESTIC WASTE MANAGEMENT	KCA RECYCLABLES: PER KILOGRAMS PER CAPITA	KCA DOMESTIC WASTE: PER KILOGRAMS PER CAPITA
<b>\$</b>	<b>\$</b>		
103.39	39.80	0.82	171.05
88.35	29.22	Nil	N/A
84.45	34.47	Nil	1186.74
95.69	58.09	67.68	887.57
69.00	36.39	48.91	225.30
131.63	82.08	Nil	N/A
106.87	69.20	Nil	673.99
81.75	34.58	30.69	385.70
104.45	48.48	101.99	1002.94
53.66	36.53	33.39	375.56
93.50	42.87	16.38	940.36
55.60	13.98	Nil	334.83
80.17	45.59	Nil	416.32
96.07	83.27	Nil	583.66
84.08	41.78	Nil	67.27
97.60	33.33	61.58	211.82
91.10	49.95	6.34	560.12
97.99	12.00	0.59	677.67
88.25	24.86	82.23	175.04
<b>86.87</b>	<b>39.37</b>	<b>40.05</b>	<b>525.57</b>

N/A = Data not available for Council

## LIBRARY SERVICES

## DOMESTIC WASTE MANAGEMENT & RECYCLING SERVICES

COUNCIL	EXPENDITURE		ISSUES		AVERAGE CHARGE FOR DOMESTIC WASTE MANAGEMENT SERVICES PER RESIDENTIAL PROPERTY	COLLECTION COSTS PER SERVICE FOR DOMESTIC WASTE MANAGEMENT	KCA RECYCLABLES: KILOGRAMS PER CAPITA	KCA DOMESTIC WASTE: KILOGRAMS PER CAPITA
	PER CAPITA	PER CAPITA	PER CAPITA	PER CAPITA				
CATEGORY 19		\$						
Nil								
CATEGORY 20								
Nil								
CATEGORY 21								
Central Darling Shire Council .....	N/A		N/A		100.92	78.88	Nil	500.75
<b>Category Average</b> .....	<b>N/A</b>		<b>N/A</b>		<b>100.92</b>	<b>78.88</b>	<b>Nil</b>	<b>500.75</b>
CATEGORY 22								
Cobar Shire Council .....	23.05		6.12		100.10	63.20	Nil	N/A
<b>Category Average</b> .....	<b>23.05</b>		<b>6.12</b>		<b>100.10</b>	<b>63.20</b>	<b>Nil</b>	<b>N/A</b>

N/A = Data not available for Council

**EXPLANATION OF KEY PERFORMANCE INDICATORS - LIBRARY SERVICES**

**2.1 Expenditure per Capita**

**Objective** Measures the gross expenditure for library services on a per capita basis.

**Formula**  $\frac{\text{Total Gross Expenditure}}{\text{Total Permanent Population within Council Boundaries}}$

Total Permanent Population within Council Boundaries

**2.2 Issues per Capita**

**Objective** Measures unit issues on a per capita basis.

**Formula**  $\frac{\text{Number of Issues Recorded}}{\text{Total Permanent Population within Council Boundaries}}$

Total Permanent Population within Council Boundaries

## EXPLANATION OF KEY PERFORMANCE INDICATORS - DOMESTIC WASTE MANAGEMENT & RECYCLING SERVICES

### 3.1 Average Charge for Domestic Waste Management Services

**Objective** To highlight the relative level of Council's DWMS charge for comparative purposes.

**Formula** 
$$\frac{\text{Total Domestic Waste Management Charges}}{\text{Number of Residential Properties receiving Service}}$$

### 3.2 Collection Costs Per Service for Domestic Waste Management

**Objective** To assess the efficiency of domestic waste collection (including recyclables).

**Formula** 
$$\frac{\text{Total Waste Collection Costs excluding Tipping costs (Domestic)}}{\text{Number of Services (Domestic Pick-ups per Week)}}$$

### 3.3 KCA Recyclables - Kilograms per Capita per Annum

**Objective** Measures the effectiveness of Council's recycling service.

**Formula** 
$$\frac{\text{Total Kilograms of Recyclables Collected}}{\text{Total Permanent Population within Council boundaries}}$$

**EXPLANATION OF KEY PERFORMANCE INDICATORS - DOMESTIC WASTE MANAGEMENT  
& RECYCLING SERVICES (CONTINUED)**

**3.4 KCA Domestic Waste - Kilograms per Capita per Annum**

**Objective** Measures the effectiveness of Council's efforts in domestic waste minimisation.

**Formula** 
$$\frac{\text{Total Kilograms of Domestic Waste Collected}}{\text{Total Permanent Population within Council boundaries}}$$

## ROAD SERVICES

## SEWERAGE SERVICES

## WATER SERVICES

COUNCIL	ROAD MTCCE COSTS		ROAD MTCCE COSTS		ROAD MTCCE COSTS		AVERAGE ACCOUNT		OPERATING COSTS		AVERAGE ACCOUNT		OPERATING COSTS	
	PER LANED KM	URBAN SEALED ROADS	PER LANED KM	RURAL SEALED ROADS	PER LANED KM	UNSEALED ROADS	(\$/CONNECTION)	(\$/CONNECTION)	(\$/CONNECTION)	(\$/CONNECTION)	(\$/CONNECTION)	(\$/CONNECTION)	(\$/CONNECTION)	(\$/CONNECTION)
<b>CATEGORY 1</b>														
Sydney City Council .....	9409.63		Nil		Nil		\$		Nil		\$		Nil	
<b>Category Average</b> .....	<b>9409.63</b>		<b>Nil</b>		<b>Nil</b>		<b>Nil</b>		<b>Nil</b>		<b>Nil</b>		<b>Nil</b>	
<b>CATEGORY 2</b>														
Burrwood Council .....	2531.20		Nil		Nil		Nil		Nil		Nil		Nil	
Concord Council .....	2190.27		Nil		Nil		Nil		Nil		Nil		Nil	
Hunters Hill, The Council of the Municipality of .....	3203.48		Nil		Nil		Nil		Nil		Nil		Nil	
Mosman Municipal Council .....	3361.48		Nil		Nil		Nil		Nil		Nil		Nil	
Strathfield Municipal Council .....	4573.60		Nil		Nil		Nil		Nil		Nil		Nil	
<b>Category Average</b> .....	<b>3069.10</b>		<b>Nil</b>		<b>Nil</b>		<b>Nil</b>		<b>Nil</b>		<b>Nil</b>		<b>Nil</b>	
<b>CATEGORY 3</b>														
Astfield, The Council of the Municipality of .....	5915.50		Nil		Nil		Nil		Nil		Nil		Nil	
Auburn Council .....	4135.00		Nil		Nil		Nil		Nil		Nil		Nil	
Botany Bay, The Council of the City of .....	6049.59		Nil		Nil		Nil		Nil		Nil		Nil	
Drummoyne Council .....	4386.79		Nil		Nil		Nil		Nil		Nil		Nil	
Hurstville City Council .....	1978.00		Nil		Nil		Nil		Nil		Nil		Nil	
Kogarah Municipal Council .....	4125.70		Nil		Nil		Nil		Nil		Nil		Nil	
Lane Cove Council .....	3075.00		Nil		Nil		Nil		Nil		Nil		Nil	
Leichhardt Municipal Council .....	4315.79		Nil		Nil		Nil		Nil		Nil		Nil	
Manly Council .....	5019.76		Nil		Nil		Nil		Nil		Nil		Nil	
North Sydney Council .....	2918.90		Nil		Nil		Nil		Nil		Nil		Nil	
Pitwater Council .....	3108.37		Nil		Nil		Nil		Nil		Nil		Nil	
South Sydney City Council .....	1044.46		Nil		Nil		Nil		Nil		Nil		Nil	
Waverley Council .....	3592.59		Nil		Nil		Nil		Nil		Nil		Nil	
Willoughby City Council .....	1312.23		Nil		Nil		Nil		Nil		Nil		Nil	
Woollahra Municipal Council .....	2219.71		Nil		Nil		Nil		Nil		Nil		Nil	
<b>Category Average</b> .....	<b>3132.75</b>		<b>Nil</b>		<b>Nil</b>		<b>Nil</b>		<b>Nil</b>		<b>Nil</b>		<b>Nil</b>	

ROAD SERVICES

SEWERAGE SERVICES

WATER SERVICES

COUNCIL	ROAD MTCR COSTS		ROAD MTCR COSTS		ROAD MTCR COSTS		AVERAGE ACCOUNT		OPERATING COSTS		AVERAGE ACCOUNT		OPERATING COSTS	
	PER LANED KM	URBAN SEALED ROADS	PER LANED KM	RURAL SEALED ROADS	PER LANED KM	UNSEALED ROADS	(\$/CONNECTION)	(\$/CONNECTION)	(\$/CONNECTION)	(\$/CONNECTION)	(\$/CONNECTION)	(\$/CONNECTION)	(\$/CONNECTION)	(\$/CONNECTION)
<b>CATEGORY 4</b>	<b>\$</b>	<b>\$</b>	<b>\$</b>	<b>\$</b>	<b>\$</b>	<b>\$</b>	<b>\$</b>	<b>\$</b>	<b>\$</b>	<b>\$</b>	<b>\$</b>	<b>\$</b>	<b>\$</b>	<b>\$</b>
Holroyd City Council .....	3860.95		Nil		Nil		Nil		Nil		Nil		Nil	
Ku-ring-gai Municipal Council .....	7061.32		Nil		Nil		Nil		Nil		Nil		Nil	
Marrickville Council .....	3852.15		Nil		Nil		Nil		Nil		Nil		Nil	
Randwick City Council .....	3414.11		Nil		Nil		Nil		Nil		Nil		Nil	
Rockdale City Council .....	782.51		Nil		Nil		Nil		Nil		Nil		Nil	
Ryde City Council .....	1742.70		Nil		Nil		Nil		Nil		Nil		Nil	
<b>Category Average .....</b>	<b>3943.05</b>		<b>Nil</b>		<b>Nil</b>		<b>Nil</b>		<b>Nil</b>		<b>Nil</b>		<b>Nil</b>	

CATEGORY 5

Bankstown City Council .....	3091.15		Nil		3091.17		Nil		Nil		Nil		Nil	
Blacktown City Council .....	2024.62		2024.62		8720.96		Nil		Nil		Nil		Nil	
Canterbury City Council .....	3309.38		Nil		Nil		Nil		Nil		Nil		Nil	
Fairfield City Council .....	4280.70		717.74		322.03		Nil		Nil		Nil		Nil	
Parramatta City Council .....	1959.00		Nil		Nil		Nil		Nil		Nil		Nil	
Sutherland Shire Council .....	3229.22		Nil		Nil		Nil		Nil		Nil		Nil	
Warringah Council .....	2457.89		2220.16		2173.91		Nil		Nil		Nil		Nil	
<b>Category Average .....</b>	<b>2885.59</b>		<b>1786.69</b>		<b>3842.58</b>		<b>Nil</b>		<b>Nil</b>		<b>Nil</b>		<b>Nil</b>	

## ROAD SERVICES

## SEWERAGE SERVICES

## WATER SERVICES

COUNCIL	ROAD MTCR COSTS		ROAD MTCR COSTS		ROAD MTCR COSTS		AVERAGE ACCOUNT	OPERATING COSTS	AVERAGE ACCOUNT	OPERATING COSTS
	PER LANED KM	URBAN SEALED ROADS	PER LANED KM	RURAL SEALED ROADS	PER LANED KM	UNSEALED ROADS				
<b>CATEGORY 6</b>		<b>\$</b>		<b>\$</b>		<b>\$</b>		<b>\$</b>		<b>\$</b>
Armidale City Council	1158.70		955.64		1150.47		221.73	178.55	403.50	325.37
Bathurst City Council	1614.18		1997.60		2156.77		341.85	227.86	541.59	305.74
Bega Valley Shire Council	1436.88		1128.21		560.97		501.49	355.47	477.29	437.28
Broken Hill City Council	4837.44		Nil		2631.58		Nil	Nil	Nil	Nil
Byron Shire Council	2684.53		3845.88		903.22		443.58	262.97	358.23	348.40
Casino Council	2351.74		1590.55		801.00		322.11	158.57	413.39	171.95
Deniliquin Council	2491.00		1466.00		1174.44		336.00	192.00	399.00	287.00
Eurobodalla Shire Council	2082.10		826.67		738.68		517.23	238.23	429.66	187.19
Glen Innes Municipal Council	1633.52		174.40		450.07		183.54	170.50	335.94	289.16
Goulburn City Council	1656.10		Nil		Nil		312.93	231.25	430.37	269.32
Grafton City Council	1720.72		391.16		210.94		311.04	119.79	272.09	105.37
Great Lakes Council	1261.95		1054.19		765.56		338.20	276.09	475.33	374.82
Greater Lithgow City Council	1142.11		603.23		461.67		255.50	138.91	455.53	215.75
Griffith City Council	1427.94		890.26		689.79		305.40	248.02	412.50	349.52
Kempsey Shire Council	1432.89		758.89		396.88		475.49	248.26	342.36	163.67
Kiama, The Council of the Municipality of	1412.26		1621.62		2508.31		Nil	Nil	Nil	Nil
Queanbeyan City Council	1663.80		Nil		1012.50		264.11	162.41	327.98	238.37
<b>Category Average</b>	<b>1744.20</b>		<b>1144.48</b>		<b>642.38</b>		<b>357.67</b>	<b>223.29</b>	<b>412.05</b>	<b>274.49</b>

ROAD SERVICES

SEWERAGE SERVICES

WATER SERVICES

COUNCIL	ROAD MTCCE COSTS			AVERAGE ACCOUNT (\$/CONNECTION)	OPERATING COSTS		AVERAGE ACCOUNT (\$/CONNECTION)	OPERATING COSTS	
	PER LANED KM URBAN SEALED ROADS	PER LANED KM RURAL SEALED ROADS	PER LANED KM UNSEALED ROADS		(\$/CONNECTION)	(\$/CONNECTION)		(\$/CONNECTION)	(\$/CONNECTION)
<b>CATEGORY 7</b>	<b>\$</b>	<b>\$</b>	<b>\$</b>	<b>\$</b>	<b>\$</b>	<b>\$</b>	<b>\$</b>	<b>\$</b>	<b>\$</b>
Albury City Council .....	1690.52	1916.25	845.41	276.73	169.46	333.89	250.15	250.15	250.15
Ballina Shire Council .....	1423.66	1566.82	1529.42	423.96	184.71	320.06	249.16	249.16	249.16
Cessnock City Council .....	2007.82	1838.75	926.52	Nil	Nil	Nil	Nil	Nil	Nil
Coffs Harbour City Council .....	1949.19	710.52	1361.76	572.09	230.18	326.91	214.64	214.64	214.64
Dubbo City Council .....	3913.27	1611.52	1012.06	416.41	219.38	480.58	251.00	251.00	251.00
Greater Taree City Council .....	1519.80	805.46	586.57	464.25	214.57	Nil	Nil	Nil	Nil
Hastings Council .....	5083.89	1782.35	1214.15	410.70	185.32	393.97	170.98	170.98	170.98
Lismore City Council .....	2992.11	1152.44	1226.45	327.80	237.69	416.51	351.08	351.08	351.08
Maitland City Council .....	249.50	874.03	963.02	Nil	Nil	Nil	Nil	Nil	Nil
Orange City Council .....	4848.29	1824.43	1753.52	414.71	199.75	258.07	219.52	219.52	219.52
Port Stephens Council .....	5200.00	1158.58	2240.26	Nil	Nil	Nil	Nil	Nil	Nil
Shellharbour City Council .....	1965.53	407.79	687.50	Nil	Nil	Nil	Nil	Nil	Nil
Tamworth City Council .....	2346.51	416.67	1919.39	297.04	148.52	400.23	186.36	186.36	186.36
Tweed Shire Council .....	1686.05	1620.18	1182.76	367.99	151.11	363.51	102.54	102.54	102.54
Wagga Wagga City Council .....	934.24	1355.76	159.75	244.36	106.97	Nil	Nil	Nil	Nil
Wingecarribee Shire Council .....	3840.75	1557.69	685.79	404.29	182.12	446.63	229.48	229.48	229.48
<b>Category Average .....</b>	<b>2362.37</b>	<b>1344.63</b>	<b>725.62</b>	<b>377.55</b>	<b>179.83</b>	<b>372.92</b>	<b>211.81</b>	<b>211.81</b>	<b>211.81</b>
<b>CATEGORY 8</b>									
Shoalhaven City Council .....	2458.89	1293.81	1172.06	401.10	182.33	311.53	137.22	137.22	137.22
<b>Category Average .....</b>	<b>2458.89</b>	<b>1293.81</b>	<b>1172.06</b>	<b>401.10</b>	<b>182.33</b>	<b>311.53</b>	<b>137.22</b>	<b>137.22</b>	<b>137.22</b>
<b>CATEGORY 9</b>									
Lake Macquarie City Council .....	3474.22	1703.50	1565.00	Nil	Nil	Nil	Nil	Nil	Nil
Newcastle City Council .....	1999.44	1999.40	1006.04	Nil	Nil	Nil	Nil	Nil	Nil
Wollongong City Council .....	4185.12	33.33	5525.00	Nil	Nil	Nil	Nil	Nil	Nil
<b>Category Average .....</b>	<b>3333.21</b>	<b>1232.49</b>	<b>2200.27</b>	<b>Nil</b>	<b>Nil</b>	<b>Nil</b>	<b>Nil</b>	<b>Nil</b>	<b>Nil</b>

## ROAD SERVICES

## SEWERAGE SERVICES

## WATER SERVICES

COUNCIL	ROAD MTCCE COSTS		ROAD MTCCE COSTS		ROAD MTCCE COSTS		AVERAGE ACCOUNT		OPERATING COSTS		AVERAGE ACCOUNT		OPERATING COSTS	
	PER LANED KM	URBAN SEALED ROADS	PER LANED KM	RURAL SEALED ROADS	PER LANED KM	UNSEALED ROADS	(\$/CONNECTION)	(\$/CONNECTION)	(\$)	(\$)	(\$/CONNECTION)	(\$/CONNECTION)	(\$)	(\$)
<b>CATEGORY 10</b>														
Camden Council .....	566.72		2643.92		1755.12		Nil	Nil	Nil	Nil	Nil	Nil	Nil	Nil
<b>Category Average .....</b>	<b>566.72</b>		<b>2643.92</b>		<b>1755.12</b>		<b>Nil</b>	<b>Nil</b>	<b>Nil</b>	<b>Nil</b>	<b>Nil</b>	<b>Nil</b>	<b>Nil</b>	<b>Nil</b>
<b>CATEGORY 11</b>														
Hawkesbury City Council .....	1779.11		1746.51		1171.24		Nil	Nil	Nil	Nil	Nil	Nil	Nil	Nil
Wollondilly Shire Council .....	158.73		101.32		1027.78		Nil	Nil	Nil	Nil	Nil	Nil	Nil	Nil
<b>Category Average .....</b>	<b>1265.48</b>		<b>959.98</b>		<b>1123.92</b>		<b>Nil</b>	<b>Nil</b>	<b>Nil</b>	<b>Nil</b>	<b>Nil</b>	<b>Nil</b>	<b>Nil</b>	<b>Nil</b>
<b>CATEGORY 12</b>														
Blue Mountains City Council .....	1245.64		127.65		2749.03		Nil	Nil	Nil	Nil	Nil	Nil	Nil	Nil
Liverpool City Council .....	5057.78		Nil		Nil		Nil	Nil	Nil	Nil	Nil	Nil	Nil	Nil
Wyong Shire Council .....	821.77		1309.37		2878.79		435.15	287.92	240.67	189.97	240.67	189.97	240.67	189.97
<b>Category Average .....</b>	<b>2630.40</b>		<b>1015.77</b>		<b>2789.95</b>		<b>435.15</b>	<b>287.92</b>	<b>240.67</b>	<b>189.97</b>	<b>240.67</b>	<b>189.97</b>	<b>240.67</b>	<b>189.97</b>
<b>CATEGORY 13</b>														
Baulkham Hills, The Council of the Shire of .....	2285.00		1990.00		1333.33		Nil	Nil	Nil	Nil	Nil	Nil	Nil	Nil
Campbelltown City Council .....	4833.45		1216.00		Nil		Nil	Nil	Nil	Nil	Nil	Nil	Nil	Nil
Gosford City Council .....	3152.45		958.18		2635.14		503.75	327.37	278.09	208.63	278.09	208.63	278.09	208.63
Hornsby, The Council of the Shire of .....	3545.20		6028.00		7261.00		Nil	Nil	Nil	Nil	Nil	Nil	Nil	Nil
Penrith City Council .....	2456.75		1545.00		1668.67		Nil	Nil	Nil	Nil	Nil	Nil	Nil	Nil
<b>Category Average .....</b>	<b>3240.70</b>		<b>1937.42</b>		<b>2950.88</b>		<b>503.75</b>	<b>327.37</b>	<b>278.09</b>	<b>208.63</b>	<b>278.09</b>	<b>208.63</b>	<b>278.09</b>	<b>208.63</b>

ROAD SERVICES

SEWERAGE SERVICES

WATER SERVICES

COUNCIL	ROAD MTCR COSTS		ROAD MTCR COSTS		ROAD MTCR COSTS		AVERAGE ACCOUNT	OPERATING COSTS (\$/CONNECTION)	AVERAGE ACCOUNT	OPERATING COSTS (\$/CONNECTION)
	PER LANED KM	URBAN SEALED ROADS	PER LANED KM	RURAL SEALED ROADS	PER LANED KM	UNSEALED ROADS				
<b>CATEGORY 14</b>	<b>\$</b>	<b>\$</b>	<b>\$</b>	<b>\$</b>	<b>\$</b>	<b>\$</b>				
Bellingen Shire Council	683.11		1062.48		508.26		363.39	250.16	326.92	188.33
Dungog Shire Council	729.98		531.47		296.42		159.99	153.32	281.72	216.91
Hume Shire Council	1805.00		3986.00		190.00		674.00	218.00	362.00	202.00
Richmond River Shire Council	863.63		1896.50		773.81		328.32	202.10	390.83	398.95
Ulmarra Shire Council	599.00		215.00		261.00		Nil	Nil	235.00	130.00
Yarrowlumla Shire Council	589.74		907.30		561.17		543.86	279.24	330.66	190.09
<b>Category Average</b>	<b>859.99</b>		<b>1427.19</b>		<b>434.59</b>		<b>389.08</b>	<b>224.64</b>	<b>328.24</b>	<b>228.86</b>

CATEGORY 15

Conargo Shire Council	Nil		1742.51		1233.54		Nil	Nil	110.00	103.51
Jerrilderie Shire Council	2461.00		906.00		173.00		362.00	175.00	417.00	234.00
Nundlee Shire Council	4701.85		553.09		590.30		Nil	Nil	446.67	408.76
Urana Shire Council	948.43		177.30		265.90		Nil	Nil	Nil	Nil
Windouran Shire Council	Nil		600.94		238.54		Nil	Nil	100.00	814.81
<b>Category Average</b>	<b>1812.75</b>		<b>791.60</b>		<b>390.74</b>		<b>362.00</b>	<b>175.00</b>	<b>411.26</b>	<b>300.66</b>

## ROAD SERVICES

## SEWERAGE SERVICES

## WATER SERVICES

COUNCIL	ROAD MTCES COSTS		ROAD MTCES COSTS		ROAD MTCES COSTS		AVERAGE ACCOUNT (\$/CONNECTION)	OPERATING COSTS (\$/CONNECTION)	AVERAGE ACCOUNT (\$/CONNECTION)	OPERATING COSTS (\$/CONNECTION)
	PER LANED KM URBAN SEALED ROADS	PER LANED KM RURAL SEALED ROADS	PER LANED KM UNSEALED ROADS	PER LANED KM URBAN SEALED ROADS	PER LANED KM RURAL SEALED ROADS	PER LANED KM UNSEALED ROADS				
<b>CATEGORY 16</b>	<b>\$</b>	<b>\$</b>	<b>\$</b>	<b>\$</b>	<b>\$</b>	<b>\$</b>	<b>\$</b>	<b>\$</b>	<b>\$</b>	<b>\$</b>
Balranald Shire Council	1901.11	833.37	222.44	311.91	56.22	242.92	115.50			
Barraba Shire Council	1648.15	208.79	243.71	127.57	162.76	370.94	205.92			
Bingara Shire Council	2350.18	219.00	112.00	229.16	175.19	281.89	241.75			
Bogan Shire Council	3818.18	1914.29	426.71	352.10	257.17	556.12	542.97			
Bombala Council	1854.37	225.21	222.65	369.19	279.86	397.52	281.47			
Boorowa Council	1025.50	573.10	386.97	134.79	85.61	432.47	389.74			
Bourke Shire Council	4689.00	Nil	313.00	485.00	426.00	615.00	509.00			
Brewarrina Shire Council	1929.22	Nil	206.56	256.07	244.85	453.76	494.86			
Carrathool Shire Council	292.00	1139.39	540.00	106.83	140.11	848.56	590.08			
Coolah Shire Council	1260.07	1281.69	207.69	198.94	170.66	366.65	295.24			
Coolamon Shire Council	1984.13	876.50	649.80	157.67	86.39	Nil	Nil			
Copmanhurst Shire Council	187.50	604.76	166.97	390.00	102.50	277.03	331.08			
Crookwell Shire Council	1640.32	1155.13	435.90	288.28	175.50	390.11	290.22			
Culcairn Shire Council	1683.18	1266.20	245.84	183.61	150.77	213.74	79.76			
Dumaresq Shire Council	562.50	562.45	311.07	Nil	Nil	Nil	Nil			
Evans Shire Council	Nil	929.37	308.22	Nil	Nil	253.41	17.15			
Gloucester Shire Council	1511.44	988.21	398.07	274.16	96.53	367.90	172.46			
Gundagai Shire Council	1381.82	368.06	240.69	189.63	143.25	433.81	327.42			
Gunning Shire Council	1956.52	98.36	492.39	246.50	181.40	165.85	143.30			
Guyra Shire Council	1066.53	546.29	339.07	175.23	193.20	346.15	409.97			
Harden Shire Council	884.85	234.60	298.15	126.21	160.13	545.85	520.04			
Hay Shire Council	1908.89	486.64	63.53	275.00	269.95	413.85	320.22			
Holbrook Shire Council	1455.77	503.32	149.02	324.83	215.10	Nil	Nil			
Lockhart Shire Council	1033.67	396.16	315.29	264.72	328.96	Nil	Nil			
Manilla Shire Council	881.61	311.32	223.11	159.95	130.64	363.49	298.61			
Merrivale Shire Council	1761.01	1646.32	894.86	256.10	214.63	505.95	394.84			

(CATEGORY 16 CONTINUED PAGE 52)

**ROAD SERVICES**

**SEWERAGE SERVICES**

**WATER SERVICES**

COUNCIL	ROAD MTCR COSTS		ROAD MTCR COSTS		ROAD MTCR COSTS		AVERAGE ACCOUNT (\$/CONNECTION)	OPERATING COSTS (\$/CONNECTION)	AVERAGE ACCOUNT (\$/CONNECTION)	OPERATING COSTS (\$/CONNECTION)
	PER LANED KM URBAN SEALED ROADS	PER LANED KM RURAL SEALED ROADS	PER LANED KM URBAN SEALED ROADS	PER LANED KM RURAL SEALED ROADS	PER LANED KM UNSEALED ROADS	PER LANED KM UNSEALED ROADS				
<b>CATEGORY 16 (CONTINUED)</b>	<b>\$</b>	<b>\$</b>	<b>\$</b>	<b>\$</b>	<b>\$</b>	<b>\$</b>	<b>\$</b>	<b>\$</b>	<b>\$</b>	<b>\$</b>
Murrumbidgee Shire Council	1011.27	1569.21	121.96	121.96	336.17	190.08	326.74	167.56		
Murrumbidgee Shire Council	700.00	2085.71	1255.81	1255.81	330.97	153.66	464.53	447.64		
Nymboida Shire Council	223.21	615.38	438.30	438.30	459.63	329.19	432.43	87.44		
Oberon Council	9860.40	540.90	262.30	262.30	249.27	201.89	358.90	285.48		
Rylstone Shire Council	1568.63	1332.99	372.59	372.59	290.45	262.18	538.15	285.90		
Seyern Shire Council	1666.66	710.60	539.61	539.61	402.30	206.89	300.54	316.93		
Tallaganda Shire Council	866.00	214.00	281.00	281.00	196.63	157.00	389.89	315.00		
Tumbarumba Shire Council	2237.34	571.37	207.21	207.21	420.85	267.19	426.06	275.96		
Walcha Council	3327.59	716.87	388.66	388.66	184.47	140.15	490.02	317.96		
Warren Shire Council	2402.86	1439.00	885.71	885.71	215.38	152.66	355.34	198.02		
Weddin Shire Council	788.46	572.54	156.65	156.65	94.90	66.33	Nil	Nil		
Yallaroi Shire Council	558.29	593.72	214.66	214.66	227.27	101.01	288.76	190.61		
<b>Category Average</b>	<b>1745.95</b>	<b>749.96</b>	<b>324.31</b>	<b>324.31</b>	<b>251.12</b>	<b>186.23</b>	<b>419.62</b>	<b>314.08</b>		

## ROAD SERVICES

## SEWERAGE SERVICES

## WATER SERVICES

COUNCIL	ROAD MTCES COSTS		ROAD MTCES COSTS		ROAD MTCES COSTS		AVERAGE ACCOUNT	OPERATING COSTS	AVERAGE ACCOUNT	OPERATING COSTS
	PER LANED KM	URBAN SEALED ROADS	PER LANED KM	RURAL SEALED ROADS	PER LANED KM	UNSEALED ROADS				
<b>CATEGORY 17</b>		<b>\$</b>		<b>\$</b>		<b>\$</b>		<b>\$</b>		<b>\$</b>
Berrigan Shire Council	6352.43		2619.57		653.66		351.72	232.16	447.35	250.75
Bland Shire Council	957.42		563.06		214.67		280.79	198.30	Nil	Nil
Blayney Shire Council	1679.49		762.96		412.70		346.60	156.31	Nil	Nil
Cooma-Monaro Shire Council	1963.92		464.29		371.39		274.82	166.34	406.51	278.93
Coonabarabran Shire Council	545.19		153.19		193.23		380.03	283.38	484.45	427.52
Coonamble Shire Council	1635.34		559.27		270.03		247.92	152.39	291.55	111.93
Cootamundra Shire Council	2410.51		1822.40		481.02		110.03	130.16	377.55	383.48
Corowa Shire Council	1651.39		743.70		190.18		239.61	181.36	326.37	188.40
Gilgandra Shire Council	1342.73		474.27		195.50		180.51	106.78	415.41	274.71
Junee Shire Council	754.78		382.32		312.63		202.76	246.36	Nil	Nil
Lachlan Shire Council	3776.70		1655.81		366.66		245.29	143.71	395.09	269.71
Mulwaree Shire Council	1018.51		380.74		391.98		814.50	340.20	466.81	325.22
Murray Shire Council	1540.27		1066.25		258.23		265.00	196.42	371.75	145.09
Narrandera Shire Council	1114.73		591.99		379.89		272.44	123.40	420.29	184.71
Narramine Shire Council	1263.28		1205.44		93.19		324.78	136.46	348.79	180.72
Quirindi Shire Council	956.64		780.33		371.25		237.06	189.83	320.58	152.29
Snowy River Shire Council	938.58		304.24		128.74		367.89	298.99	349.98	208.82
Temora Shire Council	541.10		179.28		325.21		81.15	78.43	Nil	Nil
Tenterfield Shire Council	1604.96		379.97		297.46		260.05	116.49	237.37	120.18
Uralla Shire Council	1918.92		590.16		304.71		340.00	201.08	404.40	280.37
Wakool, The Council of the Shire of	1491.71		283.23		117.40		367.47	127.71	509.36	171.43
Walgett Shire Council	1540.04		545.14		205.61		198.92	123.57	463.47	360.16
Wellington Council	1058.82		286.82		221.08		245.60	138.60	592.02	390.04
Wentworth Shire Council	1510.42		297.81		177.03		289.41	241.43	274.22	259.18
Yass Shire Council	1129.40		3621.19		428.19		383.11	316.00	521.18	440.26
<b>Category Average</b>	<b>1593.03</b>		<b>812.33</b>		<b>262.98</b>		<b>265.25</b>	<b>179.15</b>	<b>398.40</b>	<b>264.87</b>

*Comparative Information on New South Wales Local Government Councils 1994/95*

**ROAD SERVICES**

**SEWERAGE SERVICES**

**WATER SERVICES**

COUNCIL	ROAD MTCR COSTS		ROAD MTCR COSTS		ROAD MTCR COSTS		AVERAGE ACCOUNT	OPERATING COSTS (\$/CONNECTION)	AVERAGE ACCOUNT	OPERATING COSTS (\$/CONNECTION)
	PER LANED KM	URBAN SEALED ROADS	PER LANED KM	RURAL SEALED ROADS	PER LANED KM	UNSEALED ROADS				
<b>CATEGORY 18</b>	<b>\$</b>	<b>\$</b>	<b>\$</b>	<b>\$</b>	<b>\$</b>	<b>\$</b>	<b>\$</b>	<b>\$</b>	<b>\$</b>	<b>\$</b>
Cabonne Council .....	336.63		4884.62		907.29	260.51	184.66	600.38	354.46	
Cowra Shire Council .....	544.23		1351.48		181.41	129.52	80.53	394.19	306.23	
Forbes Shire Council .....	1075.75		520.48		419.21	269.72	250.16	422.52	310.18	
Gunnedah Shire Council.....	1683.33		385.46		631.02	184.86	123.84	361.60	234.87	
Inverell Shire Council.....	1600.00		442.88		728.90	207.76	169.31	447.03	308.48	
Kyogle Council .....	4026.69		4.61		358.81	221.96	138.86	294.73	234.01	
Leeton Shire Council .....	1505.75		1123.30		597.67	221.64	197.48	471.84	328.06	
Macleay Council .....	1928.03		658.85		922.00	258.74	169.50	Nil	Nil	
Moree Plains Shire Council .....	2087.87		2124.52		526.00	378.65	227.13	375.70	275.45	
Mudgee Shire Council .....	2654.29		1595.62		538.04	208.96	126.88	564.67	207.14	
Muswellbrook Shire Council .....	1829.41		956.34		108.28	230.15	172.20	378.82	246.09	
Nambucca Shire Council .....	1860.18		939.42		333.30	294.46	181.09	258.68	147.19	
Narrabri Shire Council .....	4385.82		1613.00		1047.77	189.14	132.98	334.08	239.87	
Parkes Shire Council .....	3359.71		1485.49		317.15	105.42	85.52	482.35	378.46	
Parry Shire Council .....	1428.87		2424.43		698.84	313.69	114.37	317.52	237.68	
Score Shire Council .....	1953.13		1931.00		977.23	379.83	285.41	473.82	358.80	
Singleton Shire Council .....	1700.29		1704.01		613.75	253.61	254.20	465.03	298.01	
Tumut Shire Council .....	4430.23		1322.91		459.82	305.39	186.40	266.74	207.65	
Young Shire Council .....	1787.44		1501.13		364.26	127.11	91.56	472.33	405.56	
<b>Category Average .....</b>	<b>2035.97</b>		<b>1304.76</b>		<b>544.38</b>	<b>233.76</b>	<b>167.37</b>	<b>405.61</b>	<b>278.17</b>	

## ROAD SERVICES

## SEWERAGE SERVICES

## WATER SERVICES

COUNCIL	ROAD MTCE COSTS		ROAD MTCE COSTS		ROAD MTCE COSTS		AVERAGE ACCOUNT	OPERATING COSTS	AVERAGE ACCOUNT	OPERATING COSTS
	PER LANED KM	URBAN SEALED ROADS	PER LANED KM	RURAL SEALED ROADS	PER LANED KM	UNSEALED ROADS				
CATEGORY 19										
Nil		\$		\$			\$	\$		\$
CATEGORY 20										
Nil										
CATEGORY 21										
Central Darling Shire Council		Nil		305.56			429.91	261.68	650.34	584.46
<b>Category Average</b>		<b>Nil</b>		<b>305.56</b>			<b>429.91</b>	<b>261.68</b>	<b>650.34</b>	<b>584.46</b>
CATEGORY 22										
Cobar Shire Council		590.90		1326.10			318.06	141.51	733.22	614.70
<b>Category Average</b>		<b>590.90</b>		<b>1326.10</b>			<b>318.06</b>	<b>141.51</b>	<b>733.22</b>	<b>614.70</b>

**EXPLANATION OF KEY PERFORMANCE INDICATORS - ROAD SERVICES**

**4.1 (i) Road Maintenance Costs per Laned Kilometre of Urban Sealed Roads**

**Objective** To demonstrate the costs of maintaining urban sealed roads.

**Formula** 
$$\frac{\text{Total Road Maintenance Costs for Urban Sealed Roads}}{\text{Total Laned Kms of Urban Sealed Roads}}$$

**4.1 (ii) Road Maintenance Costs per Laned Kilometre of Rural Sealed Roads**

**Objective** To demonstrate the costs of maintaining rural sealed roads.

**Formula** 
$$\frac{\text{Total Road Maintenance Costs for Rural Sealed Roads}}{\text{Total Laned Kms of Rural Sealed Roads}}$$

**4.2 Road Maintenance Costs per Laned Kilometre of Unsealed Roads**

**Objective** To demonstrate the costs of maintaining unsealed roads.

**Formula** 
$$\frac{\text{Total Road Maintenance Costs (Unsealed Roads)}}{\text{Total Laned Kms of Unsealed Roads}}$$

---

## **EXPLANATION OF KEY PERFORMANCE INDICATORS - SEWERAGE SERVICES**

### **5.1 Average Account (\$/Connection)**

**Objective** To highlight the relative level of Council sewerage accounts for comparative purposes.

**Formula** 
$$\frac{\text{Revenue from Sewerage Rates and Charges}}{\text{Total No. of Premises Connected to Sewerage}}$$

### **5.2 Operating Costs (\$/Connection)**

**Objective** To assess the costs of providing services.

**Formula** 
$$\frac{\text{Management Expenses + Working \& Maintenance Expenses (ex depreciation)}}{\text{Total No. of Premises Connected to Sewerage}}$$

**EXPLANATION OF KEY PERFORMANCE INDICATORS - WATER SUPPLY SERVICES**

**6.1 Average Account (\$/Connection)**

**Objective** To highlight the level of Council water accounts for comparative purposes.

**Formula** 
$$\frac{\text{Revenue from Water Rates + Excess Water Sales \& Water Charges}}{\text{Total No. of Premises Connected to Water}}$$

**6.2 Operating Costs (\$/Connection)**

**Objective** To assess the cost of providing services.

**Formula** 
$$\frac{\text{Management Expenses + Working \& Maintenance Expenses (ex depreciation)}}{\text{Total No. of Premises Connected to Water}}$$

## PLANNING AND REGULATORY SERVICES

COUNCIL	PLANNING AND REGULATORY COSTS PER CAPITA \$	No. of BA's			MEAN			MEDIAN TIME			LEGAL COSTS TO TOTAL PLANNING & REGULATORY COSTS %	
		DETERMINED	TURNAROUND TIME IN CALENDAR DAYS FOR BAS	IN CALENDAR DAYS FOR BAS	DETERMINED	TURNAROUND TIME IN CALENDAR DAYS FOR DAS	IN CALENDAR DAYS FOR DAS	DETERMINED	TURNAROUND TIME IN CALENDAR DAYS FOR DAS	IN CALENDAR DAYS FOR DAS		
<b>CATEGORY 1</b>												
Sydney City Council .....	537.47	1296	21.17	12.00	776	27.00	17.00	10.48				
<b>Category Average .....</b>	<b>537.47</b>		<b>21.17</b>	<b>12.00</b>		<b>27.00</b>	<b>17.00</b>	<b>10.48</b>				
<b>CATEGORY 2</b>												
Burrwood Council .....	14.89	401	60.27	50.00	211	29.65	35.00	9.63				
Concord Council .....	9.55	505	33.30	20.00	175	83.10	66.50	19.50				
Hunters Hill, The Council of the Municipality of .....	46.56	220	65.39	58.00	225	78.52	66.00	28.95				
Mosman Municipal Council .....	41.77	560	65.20	48.00	490	71.50	60.00	22.19				
Strathfield Municipal Council .....	34.24	364	65.35	47.00	119	93.75	83.00	19.08				
<b>Category Average .....</b>	<b>27.59</b>		<b>56.42</b>	<b>48.00</b>		<b>69.39</b>	<b>66.00</b>	<b>20.70</b>				
<b>CATEGORY 3</b>												
Ashfield, The Council of the Municipality of .....	19.13	446	54.00	42.00	372	50.00	34.00	10.53				
Auburn Council .....	8.01	525	54.37	44.00	348	61.50	55.50	3.15				
Botany Bay, The Council of the City of .....	18.18	430	57.55	29.00	219	65.00	61.00	14.51				
Drummoyne Council .....	21.48	454	61.23	N/A	125	64.90	N/A	5.98				
Hurstville City Council .....	13.01	1020	53.00	42.00	422	70.00	56.00	10.57				
Kogarah Municipal Council .....	24.93	775	46.00	39.00	341	75.00	59.00	9.02				
Lane Cove Council .....	36.50	444	N/A	48.00	173	N/A	50.00	10.00				
Leichhardt Municipal Council .....	34.64	1022	34.20	28.30	543	79.30	73.50	17.64				
Manly Council .....	41.09	815	67.25	47.00	232	99.06	51.00	21.98				
North Sydney Council .....	47.89	1373	49.00	30.00	596	72.00	58.00	20.03				
Pitwater Council .....	57.82	1707	56.00	40.00	514	86.66	68.00	25.13				
South Sydney City Council .....	53.95	1059	59.00	43.00	1129	58.00	45.00	9.90				
Waverley Council .....	21.65	853	43.91	36.00	318	42.51	32.00	4.84				
Willoughby City Council .....	33.31	1275	63.00	46.00	559	97.00	76.00	18.39				
Woollahra Municipal Council .....	39.00	1153	N/A	N/A	271	N/A	N/A	27.68				
<b>Category Average .....</b>	<b>32.16</b>		<b>53.40</b>	<b>42.00</b>		<b>70.69</b>	<b>56.00</b>	<b>16.00</b>				

N/A = Data not available for Council

PLANNING AND REGULATORY SERVICES

COUNCIL	PLANNING AND REGULATORY COSTS PER CAPITA	No. of BA's DETERMINED	MEAN		MEDIAN		No. of DA's DETERMINED	MEAN		MEDIAN		LEGAL COSTS TO TOTAL PLANNING & REGULATORY COSTS %
			TURNAROUND TIME IN CALENDAR DAYS FOR BAS	IN CALENDAR DAYS	TURNAROUND TIME IN CALENDAR DAYS FOR BAS	IN CALENDAR DAYS		TURNAROUND TIME IN CALENDAR DAYS FOR DAs	IN CALENDAR DAYS FOR DAs			
<b>CATEGORY 4</b>												
Holroyd City Council .....	17.90	1043	11.13	25.00	451	59.00	43.00	2.51				
Ku-ring-gai Municipal Council .....	22.84	2290	44.00	35.00	437	126.00	111.00	19.40				
Marrickville Council .....	19.91	783	61.05	52.00	586	63.22	54.00	6.49				
Randwick City Council .....	14.80	1630	32.80	30.00	678	103.17	92.00	7.24				
Rockdale City Council .....	21.00	953	45.05	32.00	411	55.00	53.00	5.47				
Ryde City Council .....	16.67	1349	48.00	38.00	753	51.00	38.00	2.38				
<b>Category Average .....</b>	<b>18.73</b>		<b>40.09</b>	<b>32.00</b>		<b>75.26</b>	<b>53.00</b>	<b>8.21</b>				
<b>CATEGORY 5</b>												
Bankstown City Council .....	15.55	2243	40.00	22.00	964	59.00	47.00	Nil				
Blacktown City Council .....	15.52	5292	25.76	14.00	949	47.03	38.00	4.02				
Canterbury City Council .....	13.11	1060	36.00	32.00	658	46.00	35.00	2.70				
Fairfield City Council .....	12.80	2519	53.12	29.00	815	72.62	52.00	4.42				
Parramatta City Council .....	15.66	1922	45.83	30.00	966	79.63	67.00	15.00				
Sutherland Shire Council .....	23.88	3743	66.85	38.00	1726	117.80	61.00	3.25				
Warringah Council .....	22.57	2024	65.00	50.00	926	77.00	38.00	15.19				
<b>Category Average .....</b>	<b>17.03</b>		<b>46.16</b>	<b>30.00</b>		<b>77.45</b>	<b>47.00</b>	<b>6.07</b>				

N/A = Data not available for Council

## PLANNING AND REGULATORY SERVICES

COUNCIL	PLANNING AND REGULATORY COSTS PER CAPITA	No. of BA's			MEAN			MEDIAN TIME			No. of DA's			MEAN			MEDIAN TIME			LEGAL COSTS TO TOTAL PLANNING & REGULATORY COSTS %
		DETERMINED	TURNAROUND TIME IN CALENDAR DAYS FOR BAS	IN CALENDAR DAYS	IN CALENDAR DAYS	IN CALENDAR DAYS	IN CALENDAR DAYS	IN CALENDAR DAYS	IN CALENDAR DAYS	IN CALENDAR DAYS	IN CALENDAR DAYS	IN CALENDAR DAYS	IN CALENDAR DAYS	IN CALENDAR DAYS	IN CALENDAR DAYS	IN CALENDAR DAYS	IN CALENDAR DAYS	IN CALENDAR DAYS		
<b>Category 6</b>	<b>\$</b>																			
Armidale City Council	32.19	371	29.40	21.00	158	40.91	28.00	5.06												
Bathurst City Council	21.66	679	27.71	27.00	377	40.14	36.00	3.66												
Bega Valley Shire Council	20.99	786	10.69	9.00	422	31.80	44.00	3.51												
Broken Hill City Council	8.59	465	4.20	3.00	71	26.44	21.00	Nil												
Byron Shire Council	45.92	713	N/A	25.00	493	N/A	N/A	20.42												
Casino Council	6.12	219	14.66	9.00	87	11.44	10.00	7.89												
Deniliquin Council	3.29	217	18.00	13.00	28	31.50	31.00	Nil												
Eurobodalla Shire Council	42.03	1207	12.00	21.00	432	49.20	36.00	4.60												
Glen Innes Municipal Council	15.26	155	10.00	9.00	28	31.00	35.00	Nil												
Goulburn City Council	16.07	476	27.25	25.00	109	34.00	32.00	Nil												
Grafton City Council	20.47	424	18.00	17.00	132	50.00	40.00	2.07												
Greater Lakes Council	35.86	1008	31.00	22.00	457	83.00	46.00	0.78												
Greater Lithgow City Council	18.41	412	32.00	25.00	168	54.80	43.00	1.16												
Griffith City Council	11.78	478	20.20	15.00	158	39.00	25.00	0.65												
Kempsey Shire Council	16.64	558	40.00	49.00	197	51.06	44.00	2.58												
Kiama, The Council of the Municipality of	22.59	509	22.80	16.00	204	46.53	38.00	4.57												
Queanbeyan City Council	28.80	511	19.61	19.00	162	36.70	36.00	0.58												
<b>Category Average</b>	<b>23.80</b>		<b>21.47</b>	<b>19.00</b>		<b>47.02</b>	<b>36.00</b>	<b>5.00</b>												

N/A = Data not available for Council

PLANNING AND REGULATORY SERVICES

COUNCIL	PLANNING AND REGULATORY COSTS PER CAPITA	NO. OF BA'S DETERMINED	MEAN TURNAROUND TIME IN CALENDAR DAYS FOR BAS	MEDIAN TIME IN CALENDAR DAYS FOR BAS	NO. OF DA'S DETERMINED	MEAN TURNAROUND TIME IN CALENDAR DAYS FOR DAS	MEDIAN TIME IN CALENDAR DAYS FOR DAS	LEGAL COSTS TO TOTAL PLANNING & REGULATORY COSTS %
<b>CATEGORY 7</b>								
Albury City Council	30.36	1121	23.87	16.00	316	29.24	23.00	2.81
Ballina Shire Council	15.31	958	20.00	30.00	336	33.00	27.30	0.96
Cessnock City Council	15.71	1150	15.00	13.00	282	47.55	55.00	9.78
Coffs Harbour City Council	26.57	1461	9.11	7.00	320	35.62	24.00	7.92
Dubbo City Council	26.33	1003	28.95	16.00	356	26.85	19.00	0.32
Greater Taree City Council	18.96	968	33.00	22.00	453	66.00	40.00	0.59
Hastings Council	67.74	1713	28.80	21.00	508	62.50	49.00	2.84
Lismore City Council	20.44	1085	25.52	24.00	510	19.54	18.00	6.80
Maitland City Council	16.40	1346	47.68	41.00	410	63.39	49.00	6.06
Orange City Council	22.12	791	18.15	13.00	252	33.60	26.00	Nil
Port Stephens Council	30.91	1709	28.24	23.00	505	60.59	36.00	2.80
Shellharbour City Council	16.50	1105	21.00	16.00	267	46.00	42.00	0.20
Tamworth City Council	19.30	931	12.45	8.00	240	39.86	34.00	1.08
Tweed Shire Council	34.72	1765	33.00	17.00	514	58.33	34.00	2.60
Wagga Wagga City Council	19.47	1100	21.00	N/A	358	28.00	N/A	0.06
Wingecarribee Shire Council	53.78	1065	30.27	28.00	610	48.73	47.00	9.21
<b>Category Average</b>	<b>27.59</b>		<b>25.42</b>	<b>17.00</b>		<b>45.35</b>	<b>34.00</b>	<b>3.66</b>
<b>CATEGORY 8</b>								
Shoalhaven City Council	48.32	2584	30.03	20.50	1867	49.88	43.67	3.07
<b>Category Average</b>	<b>48.32</b>		<b>30.03</b>	<b>20.50</b>		<b>49.88</b>	<b>43.67</b>	<b>3.07</b>
<b>CATEGORY 9</b>								
Lake Macquarie City Council	16.19	4724	50.00	40.00	1140	61.00	49.00	4.31
Newcastle City Council	19.83	2795	34.42	24.00	723	69.04	48.00	8.24
Wollongong City Council	8.73	2534	26.10	18.00	1150	45.00	36.00	0.01
<b>Category Average</b>	<b>14.45</b>		<b>39.64</b>	<b>24.00</b>		<b>56.82</b>	<b>48.00</b>	<b>4.85</b>

N/A = Data not available for Council

## PLANNING AND REGULATORY SERVICES

COUNCIL	PLANNING AND REGULATORY COSTS PER CAPITA \$	No. of BA's			MEAN			MEDIAN TIME			LEGAL COSTS TO TOTAL PLANNING & REGULATORY COSTS %
		DETERMINED	TURNAROUND TIME IN CALENDAR DAYS FOR BAS	IN CALENDAR DAYS	IN CALENDAR DAYS	IN CALENDAR DAYS	IN CALENDAR DAYS	IN CALENDAR DAYS	IN CALENDAR DAYS		
<b>CATEGORY 10</b>											
Camden Council .....	56.49	1365	28.00	26.00	28.00	26.00	177	45.00	37.00	4.34	
<b>Category Average</b> .....	<b>56.49</b>		<b>28.00</b>	<b>26.00</b>	<b>28.00</b>	<b>26.00</b>		<b>45.00</b>	<b>37.00</b>	<b>4.34</b>	
<b>CATEGORY 11</b>											
Hawkesbury City Council .....	20.71	1373	22.37	16.00	22.37	16.00	246	46.71	35.00	5.06	
Wollondilly Shire Council .....	29.04	1053	28.00	22.00	28.00	22.00	384	43.51	35.00	3.60	
<b>Category Average</b> .....	<b>23.80</b>		<b>24.82</b>	<b>16.00</b>	<b>24.82</b>	<b>16.00</b>		<b>44.76</b>	<b>35.00</b>	<b>4.40</b>	
<b>CATEGORY 12</b>											
Blue Mountains City Council .....	48.64	2017	54.00	42.00	54.00	42.00	1697	61.00	51.00	6.43	
Liverpool City Council .....	29.11	3257	24.00	25.00	24.00	25.00	1023	53.00	52.00	2.70	
Wyong Shire Council .....	16.58	3906	32.15	30.00	32.15	30.00	1112	45.84	30.00	7.58	
<b>Category Average</b> .....	<b>29.20</b>		<b>34.06</b>	<b>30.00</b>	<b>34.06</b>	<b>30.00</b>		<b>54.46</b>	<b>51.00</b>	<b>5.33</b>	
<b>CATEGORY 13</b>											
Baulkham Hills, The Council of the Shire of .....	22.69	2250	32.73	32.70	32.73	32.70	462	45.00	60.00	0.11	
Campbelltown City Council .....	13.39	2681	38.00	19.00	38.00	19.00	533	46.23	26.00	5.21	
Gosford City Council .....	40.69	4195	53.96	48.40	53.96	48.40	1676	70.60	66.90	24.43	
Hornsby, The Council of the Shire of .....	39.00	2600	51.00	39.00	51.00	39.00	791	127.00	90.00	15.39	
Penrith City Council .....	36.15	4242	16.80	12.00	16.80	12.00	705	77.42	55.00	13.80	
<b>Category Average</b> .....	<b>30.54</b>		<b>37.85</b>	<b>32.70</b>	<b>37.85</b>	<b>32.70</b>		<b>76.50</b>	<b>60.00</b>	<b>14.44</b>	

N/A = Data not available for Council

PLANNING AND REGULATORY SERVICES

COUNCIL	PLANNING AND REGULATORY COSTS PER CAPITA	NO. OF BA'S DETERMINED	MEAN TURNAROUND TIME IN CALENDAR DAYS FOR BAS		MEDIAN TIME IN CALENDAR DAYS FOR BAS		NO. OF DA'S DETERMINED	MEAN TURNAROUND TIME IN CALENDAR DAYS FOR DAS		MEDIAN TIME IN CALENDAR DAYS FOR DAS		LEGAL COSTS TO TOTAL PLANNING & REGULATORY COSTS %
			IN CALENDAR DAYS FOR BAS	FOR BAS	IN CALENDAR DAYS FOR DAS	FOR DAS		IN CALENDAR DAYS FOR DAS	FOR DAS			
<b>CATEGORY 14</b>												
Bellingen Shire Council	\$ 30.18	361	39.23	27.00	212	59.36	46.00	7.19				
Dungog Shire Council	29.40	269	21.67	20.00	89	54.61	35.00	3.67				
Hume Shire Council	12.62	245	16.70	25.00	175	30.00	25.00	1.15				
Richmond River Shire Council	15.60	343	8.00	N/A	199	35.59	N/A	1.61				
Ulmarra Shire Council	6.97	225	28.00	32.00	68	37.00	39.00	4.65				
Yarrowlumla Shire Council	40.97	381	27.00	22.00	425	29.00	25.00	7.48				
<b>Category Average</b>	<b>24.39</b>		<b>23.80</b>	<b>25.00</b>		<b>38.20</b>	<b>35.00</b>	<b>5.49</b>				
<b>CATEGORY 15</b>												
Conargo Shire Council	0.15	Nil	Nil	Nil	22	12.00	12.00	Nil				
Jerrilderie Shire Council	34.00	34	28.03	16.00	20	17.80	11.00	Nil				
Nundle Shire Council	7.29	49	1.06	8.00	40	1.30	9.00	Nil				
Urana Shire Council	0.84	20	26.25	22.00	5	42.60	40.00	Nil				
Windouran Shire Council	6.98	Nil	Nil	Nil	1	30.00	30.00	Nil				
<b>Category Average</b>	<b>11.73</b>		<b>14.85</b>	<b>16.00</b>		<b>10.40</b>	<b>12.00</b>	<b>Nil</b>				

N/A = Data not available for Council

## PLANNING AND REGULATORY SERVICES

COUNCIL	PLANNING AND REGULATORY COSTS PER CAPITA	No. of BA's			No. of DA's			LEGAL COSTS TO TOTAL PLANNING & REGULATORY COSTS
		DETERMINED	MEAN TURNAROUND TIME IN CALENDAR DAYS FOR BAS	MEDIAN TIME IN CALENDAR DAYS FOR BAS	DETERMINED	MEAN TURNAROUND TIME IN CALENDAR DAYS FOR DAS	MEDIAN TIME IN CALENDAR DAYS FOR DAS	
<b>Category 16</b>	<b>\$</b>							<b>%</b>
Balranald Shire Council	22.80	75	N/A	N/A	100	N/A	N/A	Nil
Barraba Shire Council	4.02	40	16.30	13.00	8	57.38	54.00	Nil
Bingara Shire Council	5.02	27	9.00	7.00	8	25.50	22.50	Nil
Bogan Shire Council	7.32	60	4.00	3.00	8	30.00	30.00	Nil
Bombala Council	18.77	64	8.48	8.00	24	32.58	25.00	Nil
Boorowa Council	1.06	63	5.79	7.00	19	19.22	28.00	Nil
Bourke Shire Council	2.50	45	16.64	14.00	23	38.26	30.00	Nil
Brewarrina Shire Council	14.47	20	40.00	26.00	6	47.00	44.00	22.31
Carrathool Shire Council	22.54	36	17.30	13.00	9	32.40	27.00	Nil
Coolah Shire Council	3.20	55	17.65	14.00	4	47.25	27.00	Nil
Coolamon Shire Council	0.99	69	3.00	5.00	23	17.52	5.00	Nil
Copmanhurst Shire Council	44.99	132	17.00	19.00	57	32.00	41.00	2.51
Crookwell Shire Council	22.37	153	14.00	12.00	73	25.00	22.00	0.78
Culcairn Shire Council	13.27	49	19.71	21.00	46	24.37	22.00	Nil
Dumaresq Shire Council	14.50	85	16.88	12.00	62	23.00	21.00	6.25
Evans Shire Council	34.86	104	38.15	25.00	133	46.17	27.50	3.48
Gloucester Shire Council	15.20	130	21.95	20.00	84	44.50	42.00	1.08
Gundagai Shire Council	4.91	54	4.00	7.00	Nil	Nil	Nil	Nil
Gunning Shire Council	44.19	74	35.00	27.00	37	32.00	31.00	0.47
Guyra Shire Council	3.13	70	14.63	14.00	12	17.17	14.00	Nil
Harden Shire Council	9.81	107	15.30	12.00	31	21.87	20.00	Nil
Hay Shire Council	Nil	88	11.92	11.00	21	21.90	25.00	Nil
Holbrook Shire Council	10.46	60	10.00	10.00	20	30.00	30.00	Nil
Lockhart Shire Council	19.89	59	12.56	14.00	31	17.13	18.00	Nil
Manilla Shire Council	10.03	76	7.00	5.00	29	11.00	9.00	Nil
Merrivale Shire Council	6.45	62	19.98	15.00	64	19.53	16.00	0.03

N/A = Data not available for Council

(Category 16 CONTINUED PAGE 66)

PLANNING AND REGULATORY SERVICES

COUNCIL	PLANNING AND REGULATORY COSTS PER CAPITA \$	No. of BA's DETERMINED			MEAN	MEDIAN	No. of DA's DETERMINED			MEAN	MEDIAN	LEGAL COSTS TO TOTAL PLANNING & REGULATORY COSTS %
		TURNAROUND TIME IN CALENDAR DAYS FOR BAS	TURNAROUND TIME IN CALENDAR DAYS FOR BAS	TURNAROUND TIME IN CALENDAR DAYS FOR BAS	TURNAROUND TIME IN CALENDAR DAYS FOR BAS	TURNAROUND TIME IN CALENDAR DAYS FOR BAS	TURNAROUND TIME IN CALENDAR DAYS FOR DAS	TURNAROUND TIME IN CALENDAR DAYS FOR DAS	TURNAROUND TIME IN CALENDAR DAYS FOR DAS			
<b>CATEGORY 16 (CONTINUED)</b>												
Murrumbidgee Shire Council	9.72	91	5.00	N/A	9	25.00	N/A	2.57				
Murrurundi Shire Council	7.08	42	33.79	25.00	37	53.38	42.00	Nil				
Nymboida Shire Council	43.92	308	22.00	20.00	44	63.00	57.00	1.32				
Oberon Council	71.20	184	27.02	24.00	240	22.60	28.00	0.49				
Rylstone Shire Council	7.09	69	28.99	30.00	141	34.75	35.00	Nil				
Severn Shire Council	2.57	43	7.51	7.00	33	24.45	25.00	38.94				
Tallaganda Shire Council	40.00	104	29.50	24.00	86	51.60	27.00	19.18				
Tumbarumba Shire Council	6.10	90	17.68	22.00	49	37.63	14.00	7.06				
Walcha Council	0.56	390	13.28	13.00	17	24.00	21.00	Nil				
Warren Shire Council	3.34	35	14.00	10.00	29	28.00	25.00	Nil				
Weddin Shire Council	3.03	76	40.28	39.00	37	40.49	23.00	Nil				
Yallaro Shire Council	16.21	60	14.00	13.50	76	16.00	13.50	0.61				
<b>Category Average</b>	<b>15.30</b>		<b>18.54</b>	<b>13.50</b>		<b>31.73</b>	<b>25.00</b>	<b>2.58</b>				

N/A = Data not available for Council

## PLANNING AND REGULATORY SERVICES

COUNCIL	PLANNING AND REGULATORY COSTS PER CAPITA	No. of BA's			No. of DA's			LEGAL COSTS TO TOTAL PLANNING & REGULATORY COSTS
		DETERMINED	MEAN TURNAROUND TIME IN CALENDAR DAYS FOR BAS	MEDIAN TIME IN CALENDAR DAYS FOR BAS	DETERMINED	MEAN TURNAROUND TIME IN CALENDAR DAYS FOR DAS	MEDIAN TIME IN CALENDAR DAYS FOR DAS	
<b>Category 17</b>	<b>\$</b>							<b>%</b>
Berrigan Shire Council	16.62	192	14.01	11.00	74	15.06	10.00	0.37
Bland Shire Council	2.05	82	14.78	14.00	18	15.39	14.00	Nil
Blayney Shire Council	7.43	124	22.31	22.00	188	22.60	30.00	8.33
Cooma-Monaro Shire Council	26.48	245	19.50	14.00	130	47.34	37.00	3.48
Coonabarabran Shire Council	3.76	119	13.59	9.00	57	65.00	36.00	25.93
Coonamble Shire Council	2.10	67	15.30	14.00	26	25.00	18.00	Nil
Cootamundra Shire Council	2.75	240	14.00	12.00	62	21.00	18.00	Nil
Corowa Shire Council	12.48	273	18.75	13.00	86	16.74	33.00	Nil
Gilgandra Shire Council	0.40	94	22.00	21.00	19	20.00	16.00	Nil
Junee Shire Council	8.31	140	13.42	17.00	30	33.70	21.00	7.37
Lachlan Shire Council	12.20	112	12.64	16.00	29	16.55	13.00	Nil
Mulwaree Shire Council	23.17	365	11.76	7.00	214	10.00	20.00	9.89
Murray Shire Council	0.81	141	8.00	5.00	85	30.00	30.00	Nil
Narrandera Shire Council	5.57	107	N/A	N/A	54	N/A	N/A	1.84
Narramine Shire Council	8.05	125	10.00	10.00	90	10.12	8.00	0.26
Quirindi Shire Council	25.46	113	10.82	8.00	46	23.00	15.00	Nil
Snowy River Shire Council	92.54	146	14.63	12.00	172	51.21	32.00	11.42
Temora Shire Council	10.84	96	3.80	5.00	20	25.95	16.00	Nil
Tenterfield Shire Council	0.31	158	10.12	10.00	55	21.78	16.00	Nil
Uralla Shire Council	15.93	136	16.27	13.00	104	95.58	35.00	3.74
Wakool, The Council of the Shire of	34.35	75	24.85	20.00	79	84.42	42.00	0.55
Walgett Shire Council	7.79	106	16.15	16.00	59	33.25	28.00	0.07
Wellington Council	12.59	141	20.37	12.00	79	55.75	48.00	9.16
Wentworth Shire Council	40.91	177	12.80	10.00	73	26.27	26.50	2.20
Yass Shire Council	73.03	401	22.00	17.00	154	24.00	20.00	6.45
<b>Category Average</b>	<b>18.32</b>		<b>15.43</b>	<b>12.00</b>		<b>34.11</b>	<b>20.00</b>	<b>5.21</b>

N/A = Data not available for Council

PLANNING AND REGULATORY SERVICES

COUNCIL	PLANNING AND REGULATORY COSTS PER CAPITA	No. of BA's DETERMINED	MEAN TURNAROUND TIME IN CALENDAR DAYS FOR BAS	MEDIAN TIME IN CALENDAR DAYS FOR BAS	No. of DA's DETERMINED	MEAN TURNAROUND TIME IN CALENDAR DAYS FOR DAS	MEDIAN TIME IN CALENDAR DAYS FOR DAS	LEGAL COSTS TO TOTAL PLANNING & REGULATORY COSTS %
<b>CATEGORY 18</b>	<b>\$</b>							
Cabonne Council .....	18.68	317	37.15	N/A	206	49.52	N/A	0.29
Cowra Shire Council .....	5.37	377	6.32	8.00	76	14.00	12.00	15.37
Forbes Shire Council .....	1.21	208	11.00	6.00	84	49.98	51.00	0.18
Gunnedah Shire Council .....	10.58	284	7.75	5.00	102	34.39	30.00	0.41
Inverell Shire Council .....	8.27	381	19.00	14.00	139	17.79	12.00	0.08
Kyogle Council .....	16.07	249	12.95	8.00	146	17.50	23.00	Nil
Leeton Shire Council .....	7.33	249	N/A	N/A	94	N/A	N/A	2.01
Macleay Council .....	50.85	559	26.87	22.00	233	57.88	40.00	9.73
Moree Plains Shire Council .....	11.79	267	25.56	15.00	157	53.15	29.00	0.53
Mudgee Shire Council .....	8.33	403	13.00	11.50	227	27.00	20.00	0.73
Muswellbrook Shire Council .....	10.11	330	20.74	N/A	116	21.63	N/A	9.32
Nambucca Shire Council .....	11.61	402	20.00	23.00	200	28.00	29.00	6.91
Narrabri Shire Council .....	7.54	227	18.00	20.00	117	20.00	26.00	Nil
Parkes Shire Council .....	10.42	444	21.85	19.00	113	23.17	19.00	Nil
Parry Shire Council .....	7.75	301	22.11	16.00	94	31.86	24.00	0.01
Score Shire Council .....	22.85	314	40.00	42.00	104	29.00	35.00	3.62
Singleton Shire Council .....	31.45	555	24.20	28.00	228	46.00	58.00	5.39
Tumut Shire Council .....	8.34	311	10.00	8.00	108	30.00	28.00	Nil
Young Shire Council .....	9.78	237	19.41	23.00	50	28.32	26.00	Nil
<b>Category Average .....</b>	<b>14.19</b>		<b>20.28</b>	<b>15.00</b>		<b>34.49</b>	<b>26.00</b>	<b>4.37</b>

N/A = Data not available for Council

## PLANNING AND REGULATORY SERVICES

COUNCIL	PLANNING AND REGULATORY COSTS PER CAPITA \$	No. of BA's			MEAN			MEDIAN TIME			LEGAL COSTS TO TOTAL PLANNING & REGULATORY COSTS %
		DETERMINED	TURNAROUND TIME IN CALENDAR DAYS FOR BAS	IN CALENDAR DAYS FOR BAS	DETERMINED	TURNAROUND TIME IN CALENDAR DAYS FOR DAS	IN CALENDAR DAYS FOR DAS	DETERMINED	TURNAROUND TIME IN CALENDAR DAYS FOR DAS	IN CALENDAR DAYS FOR DAS	
CATEGORY 19	Nil										
CATEGORY 20	Nil										
<b>CATEGORY 21</b>											
Central Darling Shire Council .....	0.36	23 .....	15.50 .....	14.00	Nil .....	Nil .....	Nil	Nil	Nil	Nil	Nil
<i>Category Average .....</i>	<b>0.36</b>		<b>15.50 .....</b>	<b>14.00</b>		<b>Nil .....</b>	<b>Nil</b>	<b>Nil</b>	<b>Nil</b>	<b>Nil</b>	<b>Nil</b>
<b>CATEGORY 22</b>											
Cobar Shire Council .....	3.84	134 .....	12.20 .....	18.00	32 .....	27.80 .....	20.00	Nil	Nil	Nil	Nil
<i>Category Average .....</i>	<b>3.84</b>		<b>12.20 .....</b>	<b>18.00</b>		<b>27.80 .....</b>	<b>20.00</b>				

N/A = Data not available for Council

**EXPLANATION OF KEY PERFORMANCE INDICATORS - PLANNING & REGULATORY SERVICES**

**7.1 Planning and Regulatory Costs per Capita**

**Objective** To measure the cost of town planning and building control per head of population.

**Formula** 
$$\frac{\text{Total Planning \& Regulatory Costs}}{\text{Total Permanent Population within Council Boundaries}}$$

**7.2 (i) Mean Turnaround Time in Calendar Days for Development Applications**

**Objective** To measure the speed with which development applications are determined.

**Formula** 
$$\frac{\text{Total Calendar Days Taken to Determine Development Applications}}{\text{Number of Development Applications Determined}}$$

*Note: When joint applications submitted they are treated as a separate BA and DA.*

**7.2 (ii) Mean Turnaround Time in Calendar Days for Building Applications**

**Objective** To measure the speed with which building applications are determined.

**Formula** 
$$\frac{\text{Total Calendar Days Taken to Determine Building Applications}}{\text{Number of Building Applications Determined}}$$

*Note: When joint applications submitted they are treated as a separate BA and DA.*

---

## EXPLANATION OF KEY PERFORMANCE INDICATORS - PLANNING & REGULATORY SERVICES

### 7.3 (i) Median Time in Calendar Days for Development Applications

**Objective** To measure the speed with which development applications are determined.

**Formula** The median time is that point where one half of the population is above the median and the other half is below it. The process is to rank from lowest to highest the number of days taken to determine each application and select the middle one.

### 7.3 (ii) Median Time in Calendar Days for Building Applications

**Objective** To measure the speed with which building applications are determined.

**Formula** The median time is that point where one half of the population is above the median and the other half is below it. The process is to rank from lowest to highest the number of days taken to determine each application and select the middle one.

71

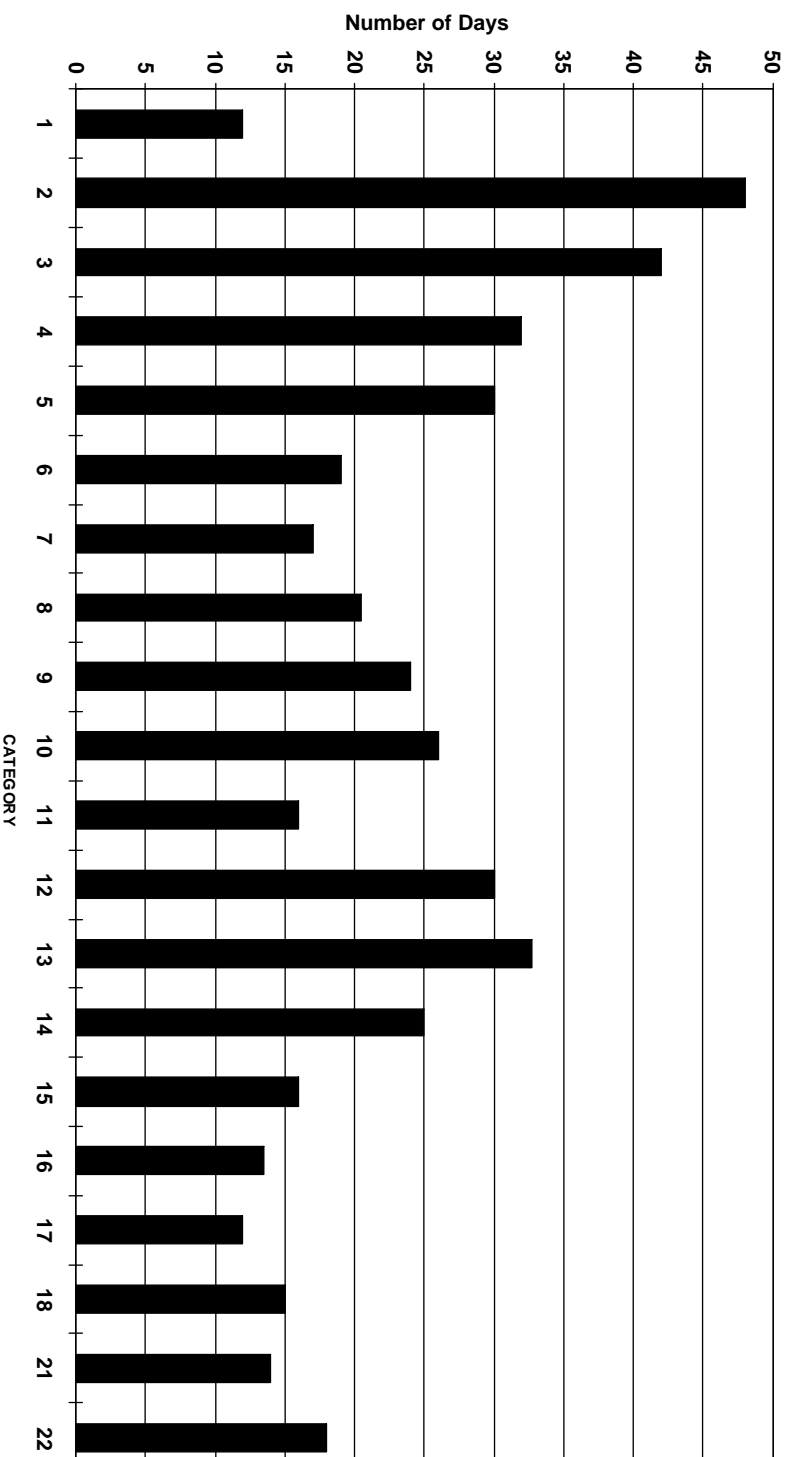
---

### 7.4 Legal Costs as a % of Total Planning and Regulatory Costs

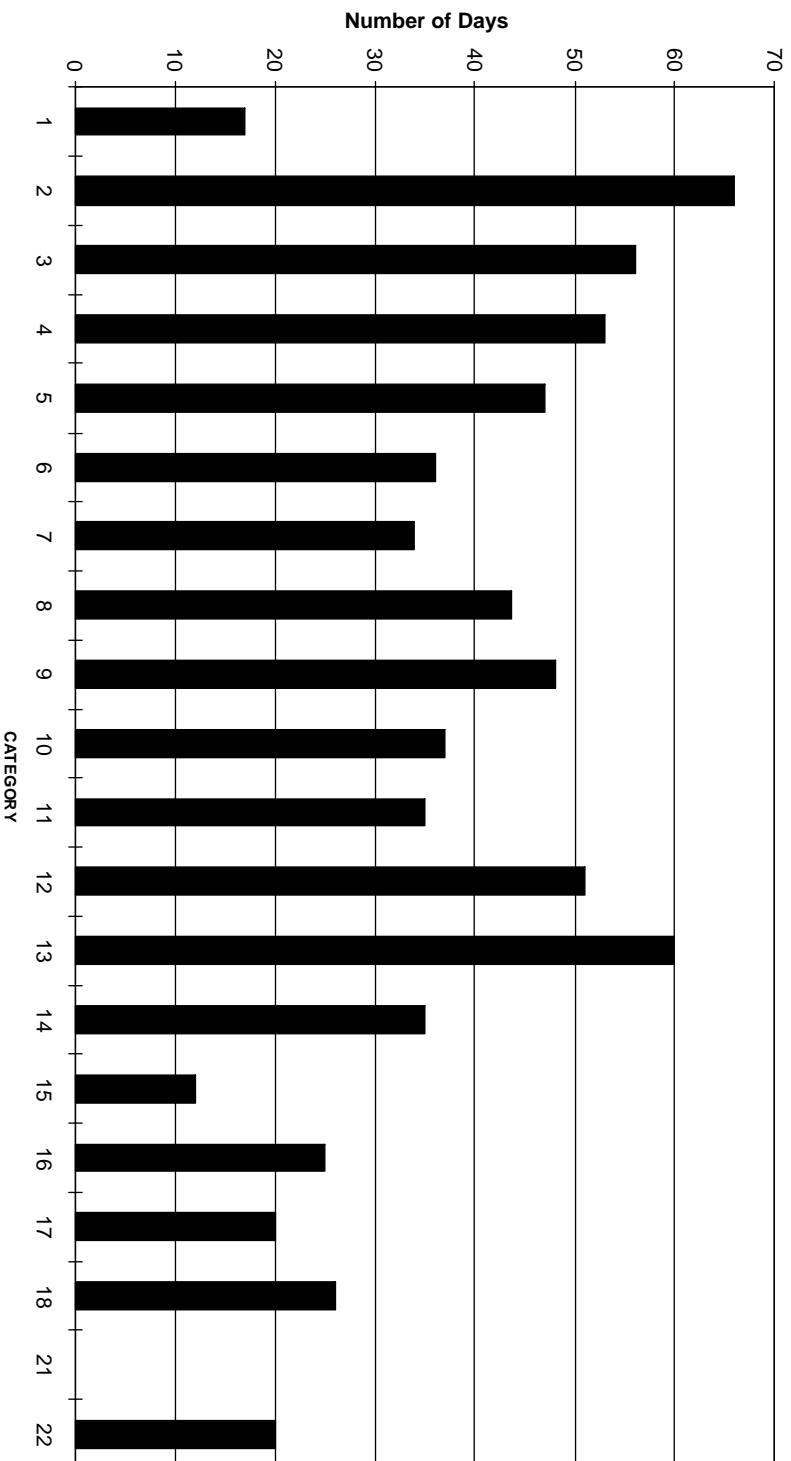
**Objective** To highlight the level of disputation in the Planning & Regulatory Process.

**Formula** 
$$\frac{\text{Legal Costs (related to P \& R only)}}{\text{Total Planning \& Regulatory Costs}}$$

**MEDIAN PROCESSING TIMES FOR BUILDING APPLICATIONS**



MEDIAN PROCESSING TIMES FOR DEVELOPMENT APPLICATIONS





ENVIRONMENTAL MANAGEMENT & HEALTH SERVICES

RECREATION & LEISURE SERVICES

COMMUNITY SERVICES

COUNCIL	ENVIRONMENTAL MANAGEMENT & HEALTH COSTS PER CAPITA	NET RECREATION & LEISURE COSTS PER CAPITA	COMMUNITY SERVICES COSTS PER CAPITA
<b>CATEGORY 1</b>	<b>\$</b>	<b>\$</b>	<b>\$</b>
Sydney City Council.....	140.00	1832.25	141.41
<b>Category Average .....</b>	<b>140.00</b>	<b>1832.25</b>	<b>141.41</b>
<b>CATEGORY 2</b>			
Burwood Council.....	13.92	42.26	19.04
Concord Council.....	5.33	66.82	3.79
Hunters Hill, The Council of the Municipality of.....	4.25	54.06	8.74
Mosman Municipal Council.....	11.00	41.90	16.84
Strathfield Municipal Council.....	10.38	33.14	9.05
<b>Category Average .....</b>	<b>9.73</b>	<b>46.29</b>	<b>12.18</b>
<b>CATEGORY 3</b>			
Ashfield, The Council of the Municipality of.....	5.42	39.49	6.05
Auburn Council.....	16.25	56.05	10.41
Botany Bay, The Council of the City of.....	15.18	68.15	55.85
Drummoyne Council.....	3.43	29.79	17.91
Hurstville City Council.....	3.18	55.18	21.14
Kogarah Municipal Council.....	5.34	34.68	9.29
Lane Cove Council.....	9.70	85.22	35.00
Leichardt Municipal Council.....	21.12	41.53	55.08
Manly Council.....	7.22	100.73	71.47
North Sydney Council.....	6.54	42.60	24.13
Pitwater Council.....	7.87	44.61	27.96
South Sydney City Council.....	34.29	92.84	39.24
Waverley Council.....	10.72	39.65	53.96
Willoughby City Council.....	5.90	61.54	61.30
Woolahra Municipal Council.....	10.15	40.63	35.24
<b>Category Average .....</b>	<b>11.88</b>	<b>55.43</b>	<b>35.14</b>

*Comparative Information on New South Wales Local Government Councils 1994/95*

COUNCIL	ENVIRONMENTAL MANAGEMENT & HEALTH COSTS PER CAPITA	RECREATION & LEISURE SERVICES NET RECREATION & LEISURE COSTS PER CAPITA	COMMUNITY SERVICES COSTS PER CAPITA
<b>ENVIRONMENTAL MANAGEMENT &amp; HEALTH SERVICES</b>			
<b>CATEGORY 4</b>			
Holroyd City Council .....	6.50	66.35	48.47
Ku-ring-gai Municipal Council .....	9.95	85.37	19.41
Marrickville Council .....	2.74	30.75	71.93
Randwick City Council .....	12.18	73.18	13.79
Rockdale City Council .....	6.23	40.42	7.80
Ryde City Council .....	4.50	36.66	12.13
<b>Category Average .....</b>	<b>7.43</b>	<b>57.46</b>	<b>26.71</b>
<b>CATEGORY 5</b>			
Bankstown City Council .....	11.90	70.60	6.77
Blacktown City Council .....	4.17	49.15	37.88
Canterbury City Council .....	7.57	27.79	36.14
Fairfield City Council .....	23.33	28.50	49.07
Parramatta City Council .....	2.26	31.53	17.02
Sutherland Shire Council .....	15.11	30.47	30.35
Warringah Council .....	10.38	38.22	35.02
<b>Category Average .....</b>	<b>10.96</b>	<b>39.99</b>	<b>31.13</b>

**ENVIRONMENTAL MANAGEMENT & HEALTH SERVICES**

**RECREATION & LEISURE SERVICES**

**COMMUNITY SERVICES**

COUNCIL	ENVIRONMENTAL MANAGEMENT & HEALTH COSTS	NET RECREATION & LEISURE COSTS	COMMUNITY SERVICES COSTS
	PER CAPITA	PER CAPITA	PER CAPITA
<b>CATEGORY 6</b>	<b>\$</b>	<b>\$</b>	<b>\$</b>
Armidale City Council .....	25.52	70.52	13.66
Bathurst City Council .....	16.82	70.67	34.11
Bega Valley Shire Council .....	29.98	21.81	14.31
Broken Hill City Council .....	16.80	52.15	73.07
Byron Shire Council .....	9.30	27.22	6.40
Casino Council .....	9.16	15.88	5.15
Deniliquin Council .....	13.04	51.59	8.22
Eurobodalla Shire Council .....	22.67	44.28	43.80
Glen Innes Municipal Council .....	15.29	56.89	245.92
Goulburn City Council .....	11.42	22.98	10.25
Grafton City Council .....	26.88	39.65	5.80
Great Lakes Council .....	6.56	44.73	6.08
Greater Lithgow City Council .....	15.14	51.37	4.35
Griffith City Council .....	18.61	61.99	0.56
Kempsey Shire Council .....	15.59	13.97	4.33
Kiama, The Council of the Municipality of .....	33.05	51.98	155.31
Queanbeyan City Council .....	5.94	49.20	87.52
<b>Category Average .....</b>	<b>17.30</b>	<b>43.69</b>	<b>34.11</b>

COUNCIL	ENVIRONMENTAL MANAGEMENT & HEALTH COSTS PER CAPITA	RECREATION & LEISURE SERVICES NET RECREATION & LEISURE COSTS PER CAPITA	COMMUNITY SERVICES COSTS PER CAPITA
<b>ENVIRONMENTAL MANAGEMENT &amp; HEALTH SERVICES</b>			
<b>ENVIRONMENTAL MANAGEMENT &amp; HEALTH COSTS PER CAPITA</b>			
<b>CATEGORY 7</b>	<b>\$</b>	<b>\$</b>	<b>\$</b>
Albury City Council .....	9.31	72.11	51.89
Baillina Shire Council .....	7.60	32.62	0.93
Cessnock City Council .....	20.77	37.24	47.31
Coffs Harbour City Council .....	11.86	35.03	4.49
Dubbo City Council .....	13.14	54.92	53.97
Greater Taree City Council .....	17.77	47.18	12.84
Hastings Council .....	11.46	26.43	1.65
Lismore City Council .....	31.60	38.66	13.23
Maitland City Council .....	7.00	49.23	10.97
Orange City Council .....	13.66	107.12	77.90
Port Stephens Council .....	16.75	47.12	49.06
Shellharbour City Council .....	3.48	40.12	22.28
Tamworth City Council .....	7.40	35.87	32.36
Tweed Shire Council .....	8.39	49.72	12.79
Wagga Wagga City Council .....	14.21	51.34	21.38
Wingecarribee Shire Council .....	3.63	49.10	28.05
<b>Category Average .....</b>	<b>12.39</b>	<b>47.29</b>	<b>25.77</b>
<b>RECREATION &amp; LEISURE SERVICES</b>			
<b>NET RECREATION &amp; LEISURE COSTS PER CAPITA</b>			
<b>CATEGORY 8</b>	<b>\$</b>	<b>\$</b>	<b>\$</b>
Shoalhaven City Council .....	14.10	48.86	20.05
<b>Category Average .....</b>	<b>14.10</b>	<b>48.86</b>	<b>20.05</b>
<b>COMMUNITY SERVICES</b>			
<b>COMMUNITY SERVICES COSTS PER CAPITA</b>			
<b>CATEGORY 9</b>	<b>\$</b>	<b>\$</b>	<b>\$</b>
Lake Macquarie City Council .....	12.82	56.80	17.61
Newcastle City Council .....	13.92	50.72	13.25
Wollongong City Council .....	12.12	44.36	21.36
<b>Category Average .....</b>	<b>12.87</b>	<b>50.53</b>	<b>17.78</b>

ENVIRONMENTAL MANAGEMENT & HEALTH SERVICES

RECREATION & LEISURE SERVICES

COMMUNITY SERVICES

COUNCIL	ENVIRONMENTAL MANAGEMENT & HEALTH COSTS PER CAPITA \$	NET RECREATION & LEISURE COSTS PER CAPITA \$	COMMUNITY SERVICES COSTS PER CAPITA \$
<b>CATEGORY 10</b>			
Camden Council .....	9.39	26.88	10.26
<b>Category Average .....</b>	<b>9.39</b>	<b>26.88</b>	<b>10.26</b>
<b>CATEGORY 11</b>			
Hawkesbury City Council .....	5.87	24.71	60.73
Wollondilly Shire Council .....	10.00	2.60	16.29
<b>Category Average .....</b>	<b>7.40</b>	<b>16.52</b>	<b>44.25</b>

79

COUNCIL	ENVIRONMENTAL MANAGEMENT & HEALTH COSTS PER CAPITA \$	NET RECREATION & LEISURE COSTS PER CAPITA \$	COMMUNITY SERVICES COSTS PER CAPITA \$
<b>CATEGORY 12</b>			
Blue Mountains City Council .....	21.81	34.49	28.71
Liverpool City Council .....	4.77	54.06	38.30
Wyong Shire Council .....	9.29	18.82	31.95
<b>Category Average .....</b>	<b>10.80</b>	<b>35.56</b>	<b>33.44</b>
<b>CATEGORY 13</b>			
Baulkham Hills, The Council of the Shire of .....	3.58	20.39	32.75
Campbelltown City Council .....	7.48	27.77	37.67
Gosford City Council .....	6.90	19.96	7.82
Hornsby, The Council of the Shire of .....	40.35	38.77	19.60
Penrith City Council .....	7.25	24.94	63.58
<b>Category Average .....</b>	<b>13.00</b>	<b>26.42</b>	<b>33.30</b>

*Comparative Information on New South Wales Local Government Councils 1994/95*

COUNCIL	ENVIRONMENTAL MANAGEMENT & HEALTH COSTS PER CAPITA	RECREATION & LEISURE SERVICES NET RECREATION & LEISURE COSTS PER CAPITA	COMMUNITY SERVICES COSTS PER CAPITA
<b>ENVIRONMENTAL MANAGEMENT &amp; HEALTH SERVICES</b>			
<b>CATEGORY 14</b>			
Bellingen Shire Council .....	3.48	26.09	8.11
Dungog Shire Council .....	8.38	37.03	9.14
Hume Shire Council .....	16.54	27.00	74.45
Richmond River Shire Council .....	18.29	28.10	52.69
Ulmatta Shire Council .....	30.47	20.09	0.97
Yarrowlumla Shire Council .....	15.38	13.72	0.21
<b>Category Average .....</b>	<b>13.95</b>	<b>25.29</b>	<b>22.76</b>
<b>CATEGORY 15</b>			
Conargo Shire Council .....	18.30	22.62	1.31
Jerilderie Shire Council .....	44.49	55.00	14.00
Nundle Shire Council .....	16.31	33.72	5.79
Urana Shire Council .....	46.17	72.84	57.12
Windouran Shire Council .....	6.32	157.01	Nil
<b>Category Average .....</b>	<b>30.90</b>	<b>53.98</b>	<b>18.57</b>

**ENVIRONMENTAL MANAGEMENT & HEALTH SERVICES**

**RECREATION & LEISURE SERVICES**

**COMMUNITY SERVICES**

COUNCIL	ENVIRONMENTAL MANAGEMENT & HEALTH COSTS	NET RECREATION & LEISURE COSTS	COMMUNITY SERVICES COSTS
	PER CAPITA \$	PER CAPITA \$	PER CAPITA \$
<b>CATEGORY 16</b>			
Balranald Shire Council .....	11.85	43.70	65.23
Barraba Shire Council .....	16.87	97.59	60.64
Bingara Shire Council .....	19.72	33.49	6.09
Bogan Shire Council .....	27.44	131.40	78.66
Bombala Council .....	45.61	46.47	0.94
Boorowa Council .....	15.27	57.63	0.38
Bourke Shire Council .....	24.26	92.29	37.41
Brewarrina Shire Council .....	47.51	124.43	119.00
Carrathool Shire Council .....	35.56	36.19	3.17
Coolah Shire Council .....	25.18	49.39	13.45
Coolamon Shire Council .....	15.80	68.64	59.75
Copmanhurst Shire Council .....	40.10	21.76	11.25
Crookwell Shire Council .....	56.13	47.31	25.80
Culcairn Shire Council .....	12.59	40.23	32.18
Dumaresq Shire Council .....	14.14	4.67	75.06
Evans Shire Council .....	30.97	6.39	Nil
Gloucester Shire Council .....	15.50	54.68	17.31
Gundagai Shire Council .....	29.20	29.97	0.52
Gunning Shire Council .....	83.26	23.26	Nil
Guyra Shire Council .....	18.00	26.02	67.12
Harden Shire Council .....	9.09	38.28	0.96
Hay Shire Council .....	35.27	61.39	22.99
Holbrook Shire Council .....	32.00	100.95	148.97
Lockhart Shire Council .....	27.54	48.11	41.50
Manilla Shire Council .....	41.26	106.02	27.22
Merriva Shire Council .....	49.19	72.18	182.66

(CATEGORY 16 CONTINUED PAGE 82)

*Comparative Information on New South Wales Local Government Councils 1994/95*

COUNCIL	ENVIRONMENTAL MANAGEMENT & HEALTH COSTS PER CAPITA	RECREATION & LEISURE SERVICES NET RECREATION & LEISURE COSTS PER CAPITA	COMMUNITY SERVICES COSTS PER CAPITA
<b>CATEGORY 16 (CONTINUED)</b>			
Murrumbidgee Shire Council .....	28.32	37.84	39.79
Murrurundi Shire Council .....	14.58	37.50	48.33
Nymboida Shire Council .....	56.98	22.07	2.70
Oberon Council .....	14.57	32.21	56.46
Rylstone Shire Council .....	23.96	57.70	1.47
Severn Shire Council .....	35.05	33.12	0.32
Tallaganda Shire Council .....	3.41	21.89	22.26
Tumbarumba Shire Council .....	16.71	60.97	51.09
Walcha Council .....	36.08	43.69	13.25
Warren Shire Council .....	49.24	136.86	5.84
Weddin Shire Council .....	17.25	23.78	0.44
Yallaroi Shire Council .....	10.81	47.63	77.44
<b>Category Average .....</b>	<b>27.83</b>	<b>51.19</b>	<b>34.49</b>

ENVIRONMENTAL MANAGEMENT & HEALTH SERVICES

RECREATION & LEISURE SERVICES

COMMUNITY SERVICES

COUNCIL	ENVIRONMENTAL MANAGEMENT & HEALTH COSTS PER CAPITA	NET RECREATION & LEISURE COSTS PER CAPITA	COMMUNITY SERVICES COSTS PER CAPITA
<b>CATEGORY 17</b>	<b>\$</b>	<b>\$</b>	<b>\$</b>
Berrigan Shire Council	21.10	30.53	21.74
Bland Shire Council	26.22	47.23	174.09
Blayney Shire Council	36.07	46.13	3.10
Cooma-Monaro Shire Council	44.07	42.04	2.86
Coonabarabran Shire Council	15.18	37.33	37.88
Coonamble Shire Council	40.19	85.90	33.71
Cootamundra Shire Council	25.66	46.90	0.73
Corowa Shire Council	12.81	18.83	29.98
Gilgandra Shire Council	34.52	51.98	497.62
Junee Shire Council	20.17	44.09	0.87
Lachlan Shire Council	31.71	127.34	304.49
Mulwaree Shire Council	50.00	5.92	0.17
Murray Shire Council	21.13	33.48	11.61
Narrandera Shire Council	15.63	52.00	105.15
Narronine Shire Council	17.89	82.46	0.45
Quirindi Shire Council	14.29	39.38	15.02
Snowy River Shire Council	70.06	46.25	58.58
Temora Shire Council	15.11	38.52	49.16
Tenterfield Shire Council	20.33	53.38	Nil
Uralla Shire Council	17.03	47.32	145.11
Wakool, The Council of the Shire of	24.43	35.69	14.50
Walgett Shire Council	23.85	47.33	50.61
Wellington Council	35.46	71.35	11.75
Wentworth Shire Council	11.71	48.21	4.13
Yass Shire Council	11.61	49.08	20.89
<b>Category Average</b>	<b>25.83</b>	<b>49.60</b>	<b>58.87</b>

*Comparative Information on New South Wales Local Government Councils 1994/95*

COUNCIL	ENVIRONMENTAL MANAGEMENT & HEALTH SERVICES	RECREATION & LEISURE SERVICES	COMMUNITY SERVICES
	ENVIRONMENTAL MANAGEMENT & HEALTH COSTS PER CAPITA	NET RECREATION & LEISURE COSTS PER CAPITA	COMMUNITY SERVICES COSTS PER CAPITA
<b>CATEGORY 18</b>	<b>\$</b>	<b>\$</b>	<b>\$</b>
Cabonne Council .....	16.09	39.14	41.53
Cowra Shire Council .....	14.78	57.07	Nil
Forbes Shire Council .....	25.52	52.24	1.68
Gunnedah Shire Council .....	36.39	61.02	52.88
Inverell Shire Council .....	9.87	42.73	43.62
Kyogle Council .....	19.54	25.15	0.75
Leeton Shire Council .....	23.08	65.57	3.04
Macleay Council .....	40.24	26.36	16.33
Moree Plains Shire Council .....	20.11	48.20	12.38
Mudgee Shire Council .....	16.94	64.22	81.89
Muswellbrook Shire Council .....	18.83	39.11	8.98
Nambucca Shire Council .....	13.82	44.93	7.24
Narrabri Shire Council .....	24.72	47.97	23.34
Parkes Shire Council .....	11.11	44.38	46.50
Parry Shire Council .....	10.59	9.80	5.06
Score Shire Council .....	11.42	67.98	35.86
Singleton Shire Council .....	6.05	31.08	48.52
Tumut Shire Council .....	21.19	35.19	0.61
Young Shire Council .....	17.41	48.83	2.15
<b>Category Average .....</b>	<b>18.53</b>	<b>44.47</b>	<b>25.00</b>

ENVIRONMENTAL MANAGEMENT & HEALTH SERVICES

RECREATION & LEISURE SERVICES

COMMUNITY SERVICES

COUNCIL	ENVIRONMENTAL MANAGEMENT & HEALTH COSTS PER CAPITA \$	NET RECREATION & LEISURE COSTS PER CAPITA \$	COMMUNITY SERVICES COSTS PER CAPITA \$
CATEGORY 19			
Nil			
CATEGORY 20			
Nil			
<b>CATEGORY 21</b>			
Central Darling Shire Council .....	28.68	21.35	13.52
<b>Category Average .....</b>	<b>28.68</b>	<b>21.35</b>	<b>13.52</b>
<b>CATEGORY 22</b>			
Cobar Shire Council .....	63.34	79.80	245.30
<b>Category Average .....</b>	<b>63.34</b>	<b>79.80</b>	<b>245.30</b>

**EXPLANATION OF KEY PERFORMANCE INDICATORS - ENVIRONMENTAL MANAGEMENT & HEALTH SERVICES**

**8.1 Environmental Management and Health Costs per Capita**

**Objective** To measure the cost of EM&H services per head of population.

**Formula** 
$$\frac{\text{Total Environmental Management \& Health Expenses}}{\text{Total Permanent Population within Council Boundaries}}$$

**EXPLANATION OF KEY PERFORMANCE INDICATORS - RECREATION & LEISURE SERVICES**

**9.1 Net Recreation & Leisure Costs per Capita**

**Objective** To measure the net cost of recreation and leisure services per head of population.

**Formula** 
$$\frac{\text{Net Recreation \& Leisure Costs}}{\text{Total Permanent Population within Council Boundaries}}$$

---

## EXPLANATION OF KEY PERFORMANCE INDICATORS - COMMUNITY SERVICES

### 10.1 Community Services Costs per Capita

**Objective** To measure the cost of community services per head of population.

**Formula** 
$$\frac{\text{Total Community Service Costs}}{\text{Total Permanent Population within Council Boundaries}}$$

